



# Early Detection of Pregnancy in Goats Based on Protein Expression Pattern using Sodium Dodecyl Sulfate Polyacrylamide Gel Electrophoresis (SDS-PAGE)

WILASINEE INYAWILERT<sup>1,2\*</sup>, ANTIKA PIARKED<sup>1</sup>, PICHITDUANG JOEMPLANG<sup>3</sup>, PATTARAPORN TATSAPONG<sup>1</sup>, ATTAPOL TIAN TONG<sup>4</sup>

<sup>1</sup>Department of Agricultural Science, Faculty of Agriculture Natural Resources and Environment, Naresuan University, Phitsanulok, 65000, Thailand; <sup>2</sup>The center for Agricultural Biotechnology, Naresuan University, Phitsanulok, 65000, Thailand; <sup>3</sup>Phitsanulok Artificial Insemination and Biotechnology Research Center, Phitsanulok, 65000, Thailand; <sup>4</sup>Faculty of Animal Sciences and Agricultural Technology, Silpakorn University, Phetchaburi, IT Campus, Phetchaburi, 76120, Thailand.

**Abstract** | Several methods for early pregnancy diagnosis in ruminants have been developed. Some of them are applicable in the field, but not enough accurate. Hence, the aim of this study was to investigate pregnancy detection in goats at earlier stages, that is, 7, 14, 21, and 28 days post-artificial insemination (post-AI). Sodium dodecyl sulphate polyacrylamide gel electrophoresis (SDS-PAGE gel electrophoresis) was used to determine the pattern of protein expression. Moreover, ultrasound was used to confirm pregnancy 45 days post-AI. Nine of female goats were under ovsynch protocol and mating was initiated. The results showed that the pattern of protein expression was different between pregnant and non-pregnant goats with molecular weights of 42 kDa and 52 kDa. The protein fraction at 42 kDa was higher on day 21 and 28 post AI. In addition, the 52 kDa protein fractions was higher at day 7, 14, 21, and 28 post-AI in pregnant than in the non-pregnant goats. Ultrasonography was used 45 days after AI to confirm the results of SDS-PAGE gel electrophoresis. The ultrasound results were consistent with SDS-PAGE gel electrophoresis. Therefore, serum protein fractions of 42 kDa and 52 kDa might serve as protein biomarkers for early detection of pregnancy in goats.

**Keywords** | Pregnancy, SDS-PAGE gel electrophoresis, Ultrasound, Goat

**Received** | September 16, 2019; **Accepted** | November 10, 2019; **Published** | November 15, 2019

\***Correspondence** | Wilasinee Inyawilert, Department of Agricultural Science, Faculty of Agriculture Natural Resources and Environment, Naresuan University, Phitsanulok, 65000, Thailand; **Email:** wilasineei@nu.ac.th

**Citation** | Inyawilert W, Piarked A, Joemplang P, Tatsapong P, Tiantong A (2019). Early detection of pregnancy in goats based on protein expression pattern using sodium dodecyl sulfate polyacrylamide gel electrophoresis (SDS-PAGE). *Adv Anim. Vet. Sci.* 7(12): 1049-1053.

**DOI** | <http://dx.doi.org/10.17582/journal.aavs/2019/7.12.1049.1053>

**ISSN (Online)** | 2307-8316; **ISSN (Print)** | 2309-3331

**Copyright** © 2019 Inyawilert *et al.* This is an open access article distributed under the Creative Commons Attribution License, which permits unrestricted use, distribution, and reproduction in any medium, provided the original work is properly cited.

## INTRODUCTION

An early and accurate pregnancy diagnosis is essential to improve efficiency and the reproductive management of ruminants (Pieterse *et al.*, 1990; Cosentino *et al.*, 2018). A successful detection of pregnancy at earliest period leads shortens calving intervals and subsequently increases production, causing huge economic benefits (Dillon *et al.*, 2006; Diskin *et al.*, 2015). Several techniques for pregnancy diagnosis have been achieved such as ultrasonography (US), rectal/abdominal palpation, pregnancy specific proteins, and hormonal assay (Murray and Newstead,

1988; Pieterse *et al.*, 1990; Szenci *et al.*, 1998; Amer, 2010). Some of them are efficient and applicable in the field. However, each technique has its own benefits and limitations (Reese *et al.*, 2018). Therefore, development of biomarkers that could be utilized as indicators of early pregnancy in ruminant could serve as alternative tools. (Diskin *et al.*, 2015; Gebremedhn *et al.*, 2018). Because of the numerous biomolecules such as steroids, prostaglandins and proteins are expressed during early pregnancy. Besides, protein expression during pregnancy is essential in detecting biomarkers related to pregnancy. Progress protein separation and identification technologies

has sped up research into bio-fluids proteomics for protein biomarker discovery (Rawat et al., 2016). Urine samples from pregnant and non-pregnant goats were collected and used as a biomarker for pregnancy detection at an early stage (that is, 16-25 days). The results demonstrated that MBP, SERPIN, and IGF were differentially expressed and were involved in various activities related to pregnancy (Rawat et al., 2016). Serum caPAG concentration of local Aardi goats was detected the pregnancy diagnosis by using Enzyme-Linked Immunosorbent Assay (ELISA). Serum caPAG concentrations showed significant differences between pregnant and non-pregnant goats on day 23 and 35 after naturally mated (Al-Hassan and AI, 2017). Moreover, polyacrylamide gel electrophoresis is one of the techniques in genomics that has emerged as a powerful analytical tool for characterizing proteins. Analysis of human spermatozoon from normal and infertile men using SDS-PAGE gel electrophoresis revealed that 57 kDa protein was present in the spermatozoa of ~95% of normozoospermic males (Rajeev and Reddy, 2004). The electrophoretic properties of seminal plasma and sperm proteins of buck semen and their correlation with sperm characters were previously investigated. It was found that protein band of 48 kDa had a positive correlation with individual motility and membrane integrity of sperm cells (Karunakaran et al., 2019). In addition, the PAG of Jawarandu goat was identified from cotyledon by using SDS-PAGE. It has been found that two PAG molecules have a molecular weight of 20 kDa and 40 kDa (Permana et al., 2013). Therefore, the aim of this study was to investigate the protein expression pattern in female goats during early pregnancy diagnosis on day 7, 14, 21, and 28, post-artificial insemination (post-AI) using sodium dodecyl sulphate polyacrylamide gel electrophoresis (SDS-PAGE gel electrophoresis).

## MATERIALS AND METHODS

### ANIMALS AND FIXED TIME ARTIFICIAL INSEMINATION

Nine Saanen goats were selected and placed under ovsynch protocol. The goats received 0.004 mg of GnRH analogue, Buserelin (1 ml Receptal, Intervet, Unterschleissheim, Germany) on day 0, followed by 0.25mg of prostaglandin F2 $\alpha$  (PGF2 $\alpha$ ) analogue, Cloprostenol (1 ml Estrumate<sup>®</sup>, Intervet UK Ltd) on day 7. A second-treatment of 0.004 mg of GnRH analogue was given 48 h after PGF2 $\alpha$ . Artificial insemination was done 24 and 48 hours after the second GnRH.

### SODIUM DODECYL SULFATE POLYACRYLAMIDE GEL ELECTROPHORESIS (SDS-PAGE)

Blood samples (5 mL) were collected from the external jugular vein. All the samples were allowed to clot at room temperature and centrifuged at 2500 g for 15 minutes to separate serum. The serum was collected and

protein concentration of the supernatant was determined. Sample not immediately analyses were stored at -80 °C until analysis. Sodium dodecyl sulfate polyacrylamide gel electrophoresis (SDS-PAGE) was used to determine protein expression pattern in pregnant and non-pregnant goats on day 7, 14, 21, 28 post-AI. Thirty (30)  $\mu$ g of total protein mixed with an equal volume sample buffer was incubated for 5 min at 100° C. The samples were immediately chilled on ice for 5 min and loaded on to SDS-polyacrylamide gel. Electrophoretic separation of proteins was performed with discontinuous 4.5% stacking (DDW, 40%Acrylamide, 1MTris-Hcl pH6.8, 10%SDS, 10%APS and Temed) and 9 % resolving polyacrylamide (DDW, 40%Acrylamide, 1.5MTris-Hcl pH 8.8, 10%SDS, 10%APS and Temed). Electrophoresis was run at 85 volt for 15 mins and 100 volt for 45 mins. To stain proteins, the SDS-PAGE gels were placed in a coomassie brilliant blue R250 dye solution for 60 mins and were de-stained for 60 mins until the protein molecules was separated and clearly visualized (Inyawilert et al., 2019). Each sample was normalized by divided the density of the band using the Image J Software (Version 1.6; NIH).

### ULTRASONOGRAPHY

Saanen goats were confirmed as pregnant or non- pregnant using a portable transrectal B-mode ultrasound scanner (Imago, Manufacture in France by ECM) 45 days after the AI. The uterine horns were scanned from their dorsal and lateral surfaces.

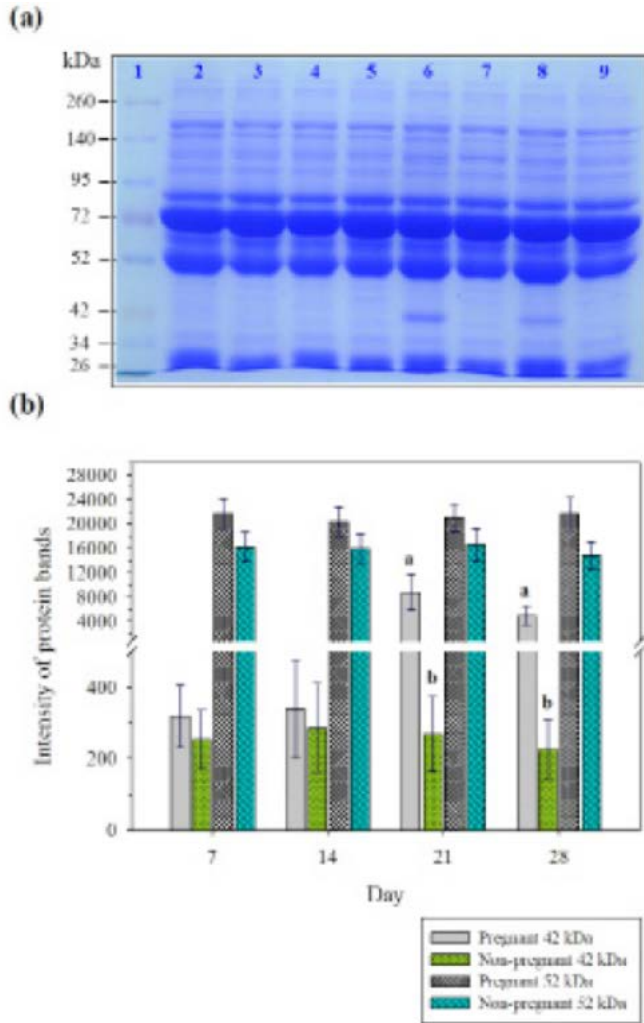
### STATISTICAL ANALYSIS

Data were analyzed using a statistical program (The R version 3.5.1 software.). Differences in protein expression patterns were determined using the t-test, and P < 0.05 was considered to be statistically significant.

## RESULTS

### POLYACRYLAMIDE GEL ELECTROPHORETIC PATTERN OF SERUM PROTEIN IN PREGNANT AND NON-PREGNANT GOAT

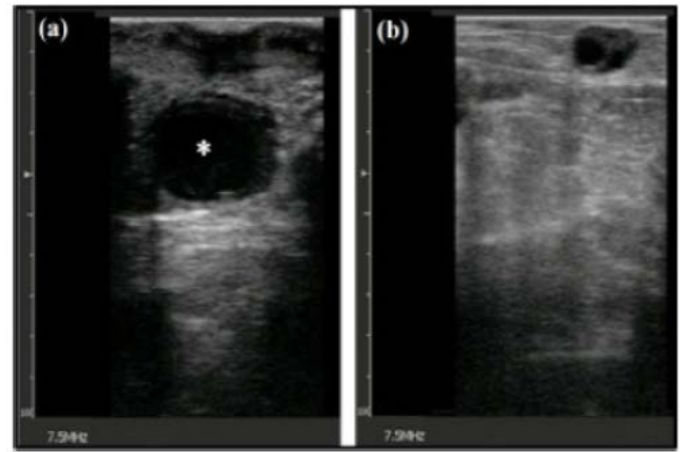
Sodium dodecyl sulfate polyacrylamide gel electrophoresis was performed to investigate the patterns of serum protein in pregnant and non-pregnant goats day 7, 14, 21, and 28 post-AI. Results showed that the proteins were separated into 20 bands, with different molecular weights ranging from 26 to 260 kDa. Protein bands with molecular weights below 34 kDa, 42 kDa, 52 kDa, 72 kDa, 95 kDa, and over 140 kDa were distinct. The protein intensity of 52 kDa was highly different between pregnant and non-pregnant goats on day 7, 14, 21, and 28 of post-AI. Moreover, the protein band with molecular weight of 42 kDa was prominent in pregnant and non-pregnant goats on day 21 and 28 of post-AI (Figure 1a, b).



**Figure 1:** (A) Separation of serum proteins derived from pregnant and non-pregnant goat on day 7, 14, 21, and 28 of post-AI using polyacrylamide electrophoresis gel (SDS-PAGE). Lane 1; protein marker, lane 2; pregnant goat on day 7 post-AI, lane 3; non-pregnant goat on day 7 post-AI, lane 4; pregnant goat on day 14 post-AI, lane 5; non-pregnant goat on day 14 post-AI, lane 6; pregnant goat on day 21 post-AI, lane 7; non-pregnant goat on day 21 post-AI, lane 8; pregnant goat on day 28 post-AI, and lane 9; non-pregnant goat on day 28 post-AI. (B) Intensity of protein bands (42 and 52 kDa) using ImageJ software analysis.

### CONFIRMATION OF PREGNANCY DIAGNOSIS IN GOAT USING ULTRASONOGRAPHY

Pregnancy was confirmed 45 days after AI using a portable transrectal B-mode ultrasound scanner. During scanning, a positive diagnosis of pregnancy was based on the presence of the amniotic and allantoic vesicles as non-echogenic cavities closely surrounded the embryo on day 45 after AI (Figure 2). Results showed that 4 of the goats were pregnant and 5 were not pregnant as the SDS-PAGE analysis showed protein bands at molecular weights of 52 kDa (Table 1).



**Figure 2:** Using ultrasonography to confirm pregnancy in goats 45 days after artificial insemination. A) Pregnant and b) Non-pregnant.

**Table 1:** Comparison of two methods of pregnancy detection in pregnant in relation to non-pregnant goats.

Method of pregnancy diagnosis	No. of Animal	Pregnancy rate (%)
SDS-PAGE (42kDa)	9	33.33(3/9)
SDS-PAGE (52kDa)	9	44.44(4/9)
Ultrasonography	9	44.44(4/9)
%Accuracy SDS-PAGE (42kDa)		75
%Accuracy SDS-PAGE (52kDa)		100
%Accuracy ultrasonography		100

SDS-PAGE (42kDa): the protein band with molecular weight of 42 kDa was prominent in pregnant goats on day 21 and 28 of post-AI. SDS-PAGE (52kDa): the protein band with molecular weight of 52 kDa was prominent in pregnant goats on day 7, 14, 21 and 28 of post-AI.

### DISCUSSION

An early pregnant has numerous signals such as steroids, prostaglandins, and many protein factors. These proteins produced by uterus and placenta have been used to detect pregnancy in many species (Lee et al., 2015). In recent years, several studies have investigated markers in serum during early pregnancy in domestic animals (Balhara et al., 2014; Buragohain et al., 2016; Buragohain et al., 2017; Gebremedhn et al., 2018). In a previous study, serum proteinograms were compared in non-pregnant and pregnant cows. It was reported that the total protein, albumin, globulin, -globulin concentration were significantly different between non-pregnant and pregnant cows during the eighth month of pregnancy (Žvorc et al., 2000). Subsequently, serum MX2 protein was observed in pregnant buffaloes on days 0, 7, 14, 21, 28 and 35 post-AI and in non-pregnant buffalo on day 0, 7, and 14 post-AI using Enzyme-linked immunosorbent assay (ELISA). It has been shown that serum MX2 protein was significantly

higher in the pregnant buffalo day 14 days post-AI compared to non-pregnant group (Buragohain et al., 2016). Pregnancy-associated glycoproteins (PAG) was studied in the serum of pregnant and non-pregnant buffaloes on day 23, 25, and 28 using two different antisera raised against PAG molecules purified from both caprine (RIA-706) and bubaline placentas (RIA-860). Results showed that both PAG-706 and PAG-860 were different between pregnant and non-pregnant buffaloes starting from day 23 post AI (Barbato et al., 2018). In this study, we determined the serum protein expression patterns in pregnant and non-pregnant goats 7, 14, 21, and 28 days post-AI using SDS-PAGE gel electrophoresis. Results showed that the protein band with molecular weight of 52 kDa was highly different between pregnant and non-pregnant goats on day 7, 14, 21, 28 post- AI. The percentage and accuracy rate for early pregnancy diagnosis was 44.44% and 100 % respectively based on the SDS-PAGE analysis and ultrasound results. While the protein band with molecular weight of 42 kDa was significantly different between pregnant and non-pregnant goats on day 21, and 28 post- AI (Figure 1). The percentage and accuracy rate for early pregnancy diagnosis was 33.33% and 75 % respectively. In the same way, early pregnancy-specific serum proteins in pregnant and non-pregnant cows at day 21 after artificial insemination were investigated using two dimensional-fluorescence difference gel electrophoresis (2D DIGE). It has been found that 7 spots were up-regulated in the pregnant serum proteins such as conglutinin precursor, modified bovine fibrinogen and IgG1, and 6 spots were down-regulated proteins such as hemoglobin, complement component 3, bovine fibrinogen (Lee et al., 2015).

## CONCLUSION

It can be concluded that serum protein fractions with molecular weight of 42 and 52 kDa may serve as protein biomarkers for early detection of pregnancy. These preliminary findings may encourage the development of serum-based pregnancy diagnostic assays for early detection of pregnancy in goats.

## ACKNOWLEDGEMENTS

This study was financially supported by the research funding of Naresuan University, Phitsanulok, Thailand. The authors would like to appreciate the Faculty of Agriculture, Natural Resources and Environment, the Center for Agricultural Biotechnology, and Bureau of Biotechnology in Livestock Production for supporting the instruments and laboratory.

## CONFLICT OF INTEREST

The authors declare no conflict of interest.

WI conceived and designed the experiments. WI, AP, PJ performed the experiments. WI and PT contributed reagents, materials and analysis tools. WI analyzed the data and wrote the manuscript. WI and AT read and approved the final manuscript.

## REFERENCES

- Al-Hassan, M, Al S (2017). Seasonal variations in serum pregnancy associated glycoproteins during early pregnancy in Aardi goats in central Saudi Arabia. *Asian Pac. J. Reprod.* 6(5): 226-230. <https://doi.org/10.4103/2305-0500.215934>
- Amer HA (2010). Ultrasonographic assessment of early pregnancy diagnosis, fetometry and sex determination in goats. *Anim. Reprod. Sci.* 117(3-4): 226-231. <https://doi.org/10.1016/j.anireprosci.2009.05.015>
- Balhara AK, Gupta M, Mohanty A, Phulia S, Sharma RK, Singh S, Singh I (2014). Changes in sera proteome in relation to day of pregnancy in early pregnant buffaloes. *Indian J. Anim. Sci.* 84(4):400-409. <https://doi.org/10.1111/rda.13294>
- Barbato O, Menchetti L, Sousa NM, Brecchia G, Malfatti A, Canali C, Beckers JF, Barile VL (2018). Correlation of two radioimmunoassay systems for measuring plasma pregnancy-associated glycoproteins concentrations during early pregnancy and postpartum periods in water buffalo. *Reprod. Domest. Anim.* 53(6): 1483-1490.
- Buragohain L, Kumar R, Nanda T, Phulia SK, Mohanty AK, Kumar S, Balhara S, Ghuman S, Singh I, Balhara AK (2016). Serum MX2 Protein as Candidate Biomarker for Early Pregnancy Diagnosis in Buffalo. *Reprod. Domest. Anim.* 51(4): 453-460. <https://doi.org/10.1111/rda.12700>
- Buragohain L, Nanda T, Ghosh A, Ghosh M, Kumar R, Kumar S, Gupta SS, Bharali A, Mohanty AK, Singh I, Balhara AK (2017). Identification of serum protein markers for early diagnosis of pregnancy in buffalo. *Anim. Sci J.* 88(8): 1189-1197. <https://doi.org/10.1111/asj.12754>
- Cosentino IO, Balaro MFA, Leal FSC, Carvalho A, Cortat de Souza PR, Arashiro EKN, Brandao FZ (2018). Accuracy of assessment of luteal morphology and luteal blood flow for prediction of early pregnancy in goats. *Theriogenol.* 121: 104-111. <https://doi.org/10.1016/j.theriogenology.2018.08.007>
- Dillon P, Berry DP, Evans RD, Buckley F, Horan B (2006). Consequences of genetic selection for increased milk production in European seasonal pasture based systems of milk production. *Livest. Sci.* 99(2-3):141-158. <https://doi.org/10.1016/j.livprodsci.2005.06.011>
- Diskin MG, Waters SM, Parr MH, Kenny DA (2015). Pregnancy losses in cattle: potential for improvement. *Reprod. Fertil. Dev.* 28(1-2): 83-93. <https://doi.org/10.1071/RD15366>
- Gebremedhn S, Salilew-Wondim D, Hoelker M, Held-Hoelker E, Neuhooff C, Tholen E, Schellander K, Tesfaye D (2018). Exploring maternal serum microRNAs during early pregnancy in cattle. *Theriogenol.* 121: 196-203. <https://doi.org/10.1016/j.theriogenology.2018.08.020>
- Inyawilert W, Rungruangsak J, Chanthi S, Liao YJ, Phinyo M, Tang PC, Nfor ON (2019). Age-related difference changes semen quality and seminal plasma protein patterns of Thai native rooster. *Int. J. Agric. Technol.* 15(2): 287-296.
- Karunakaran M, Gajare VC, Mandal A, Mondal M, Das SK,

- Ghosh MK, Rai S, Behera R (2019). Electrophoretic profile of seminal proteins and their correlation with in vitro sperm characters in Black Bengal buck semen. *Vet. World.* 12(5): 621-628. <https://doi.org/10.14202/vetworld.2019.621-628>
- Lee JE, Lee JY, Kim HR, Shin HY, Lin T, Jin DI (2015). Proteomic Analysis of Bovine Pregnancy-specific Serum Proteins by 2D Fluorescence Difference Gel Electrophoresis. *Asian-Australas J. Anim. Sci.* 28(6): 788-795. <https://doi.org/10.5713/ajas.14.0790>
  - Murray RD, Newstead R (1988). Determination of steroid hormones in goats' milk and plasma as an aid to pregnancy diagnosis using an ELISA. *Vet. Rec.* 122(7): 158-161. <https://doi.org/10.1136/vr.122.7.158>
  - Permana KA, Setiatin dan ET, Samsudewa D (2013). Identification of Pregnancy-Associated Glycoprotein (PAG) on Jawarandu Goat Cotyledons. *Sains Peternakan.* 11(2): 56-62. <https://doi.org/10.20961/sainspet.v11i2.4810>
  - Pieterse MC, Szenci O, Willemse AH, Bajcsy CS, Dieleman SJ, Taverne MA (1990). Early pregnancy diagnosis in cattle by means of linear-array real-time ultrasound scanning of the uterus and a qualitative and quantitative milk progesterone test. *Theriogenol.* 33(3):697-707. [https://doi.org/10.1016/0093-691X\(90\)90547-7](https://doi.org/10.1016/0093-691X(90)90547-7)
  - Rajeev SK, Reddy K (2004). Sperm membrane protein profiles of fertile and infertile men: Identification and characterization of fertility-associated sperm antigen. *Hum. Reprod.* 19(2): 234-242. <https://doi.org/10.1093/humrep/deh066>
  - Rawat P, Bathla S, Baithalu R, Yadav ML, Kumar S, Ali SA, Tiwari A, Lotfan M, Naru J, Jena M, Behere P, Balhara AK, Vashisth R, Singh I, Dang A, Kaushik JK, Mohanty TK, Mohanty AK (2016). Identification of potential protein biomarkers for early detection of pregnancy in cow urine using 2D DIGE and label free quantitation. *Clin. Proteomics.* 13: 15. <https://doi.org/10.1186/s12014-016-9116-y>
  - Reese ST, Pereira MHC, Edwards JL, Vasconcelos JLM, Pohler KG (2018). Pregnancy diagnosis in cattle using pregnancy associated glycoprotein concentration in circulation at day 24 of gestation. *Theriogenol.* 106: 178-185. <https://doi.org/10.1016/j.theriogenology.2017.10.020>
  - Szenci O, Beckers JF, Humblot P, Sulon J, Sasser G, Taverne MA, Varga J, Baltusen R, Schekk G (1998). Comparison of ultrasonography, bovine pregnancy-specific protein B, and bovine pregnancy-associated glycoprotein 1 tests for pregnancy detection in dairy cows. *Theriogenol.* 50(1): 77-88. [https://doi.org/10.1016/S0093-691X\(98\)00115-0](https://doi.org/10.1016/S0093-691X(98)00115-0)
  - Žvorc Z, Matijatko V, Beer Ljubic B, Foršek J, Bedrica L, Kučer N (2000). Blood serum proteinograms in pregnant and non-pregnant cows. *Veterinarski Arhiv.* 70(1): 21-30.