



# Isolation and Detection of Four Major Virulence Genes in O157:H7 and Non-O157 *E. Coli* from Beef at Yogyakarta Special Province, Indonesia

ALVITA INDRASWARI<sup>1</sup>, ARIS HARYANTO<sup>2</sup>, I WAYAN SUARDANA<sup>3</sup>, DYAH AYU WIDIASIH<sup>4\*</sup>

<sup>1</sup>Graduate School of Veterinary Science, Faculty of Veterinary Medicine, Universitas Gadjah Mada, Jl. Fauna No. 2 Karangmalang, Yogyakarta 55281, Indonesia; <sup>2</sup>Department of Biochemistry, Faculty of Veterinary Medicine, Universitas Gadjah Mada, Jl. Fauna No. 2 Karangmalang, Yogyakarta 55281, Indonesia; <sup>3</sup>Department of Veterinary Public Health, Faculty of Veterinary Science, University of Udayana, Jl. P.B. Sudirman Denpasar, Bali, Indonesia; <sup>4</sup>Department of Veterinary Public Health, Faculty of Veterinary Medicine, Universitas Gadjah Mada, Jl. Fauna No. 2 Karangmalang, Yogyakarta 55281, Indonesia.

**Abstract** | Food products of animal origin, especially beef, are at risk of *Escherichia coli* (*E. coli*) contamination during slaughtering and/or processing that poses serious threat to consumers. *E. coli* contamination affects food quality because the pathogen contains toxins that can cause disease and even death. This study aimed to detect virulence genes in *E. coli* O157:H7 and non-O157 isolates of beef sold in the traditional markets of the Yogyakarta Special Province, Indonesia, using the multiplex polymerase chain reaction (multiplex PCR). A total of 98 raw beef samples were collected aseptically from different markets of study area and cultured on various selective media followed by the analysis by multiplex PCR amplification. The results exhibited that out of 98 beef samples, 83 (84,69%) were positive for *E. coli*. The main virulence genes detected were *eae*, *fliC*, *rfbE*, and *stx2A*. All of these virulence genes of *E. coli* O157:H7 were detected in all beef samples. The 28 isolates were identified as non-O157 *E. coli* that exhibited the *eae* gene, however they were not exhibited the *rfbE* and *fliC* genes. This study concluded the presence of significant contamination of virulent *E. coli* strains in beef meat sold in the Yogyakarta Special Province, Indonesia. Moreover, multiplex PCR assay was shown to be effective for the detection of *E. coli* O157:H7 and non-O157 strains from beef and may be applied for other food matrices as well.

**Keywords** | Beef, *Escherichia coli* O157, Indonesia, Multiplex PCR, Virulence

**Received** | May 17, 2021; **Accepted** | May 21, 2021; **Published** | September 25, 2021

**\*Correspondence** | Dyah Ayu Widiasih, Department of Veterinary Public Health, Faculty of Veterinary Medicine, Universitas Gadjah Mada, Jl. Fauna No. 2 Karangmalang, Yogyakarta 55281, Indonesia; **Email:** dyahaw@ugm.ac.id

**Citation** | Indraswari A, Haryanto A, Suardana IW, Widiasih DA (2021). Isolation and detection of four major virulence genes in O157:H7 and non-O157 *E. coli* from beef at yogyakarta special province, indonesia. J. Anim. Health Prod. 9(4): 371-379.

**DOI** | <http://dx.doi.org/10.17582/journal.jahp/2021/9.4.371.379>

**ISSN** | 2308-2801

**Copyright** © 2021 Widiasih et al. This is an open access article distributed under the Creative Commons Attribution License, which permits unrestricted use, distribution, and reproduction in any medium, provided the original work is properly cited.

## INTRODUCTION

*Escherichia coli* O157:H7 is a subset of enterohemorrhagic *E. coli* (EHEC) that can cause diarrhea in human. *Escherichia coli* O157:H7 differ from normal flora found in the intestine and are categorized into specific

group based on virulence factors, such as exotoxin (Fernandez, 2008). The EHEC produces Shiga-like toxin, it is also called Shiga toxin (*stx*)-producing *E. coli* (STEC). *Stx* consists of two subgroups, namely *stx1* and *stx2*. Other virulence factors found in EHEC are *eae* (intimin), *rfbE* (O157 antigen), and *fliC* (flagellar antigen). EHEC lives

in animal intestines and can be transferred to humans through contaminated food (CDC, 2016). Cattle are known as the main reservoir of *E. coli* O157:H7, but the strain also found in other animals such as sheep, goats, cats, chickens, gulls (Nataro and Kaper, 1998) and pigs (Goma et al., 2019; Tseng et al., 2014). According to Widiastih et al. (2003), the greatest excretion of *E. coli* O157:H7 was observed in naturally infected cattle suffering from food poisoning by STEC. Most infected animals do not indicate any clinical symptoms, although young animals may suffer enteric disease caused by members of some non-O157 serogroups (Spickler, 2016). *Escherichia coli* O157: H7 is one of the most important foodborne infectious agents. Transmission of this bacterium to humans mainly occurs through consumption of undercooked meat, unpasteurized animal products, and feces contaminated water as well as human-to-human contact (Fernandez, 2008). According to some previous reports (Hastuti et al., 2015; Rinca et al., 2016; Suardana et al., 2010; Baehaqi et al., 2015) in Bali, Indonesia the occurrence of *E. coli* O157:H7 in beef, cattle feces, and human feces indicates the high zoonotic potential of the serotype; thus, further studies on virus epidemiology and virulence factors were strongly suggested.

The high level of similarity between *E. coli* O157: H7 isolates found in humans and cattle indicates a high zoonotic potential (Suardana et al., 2015). In the United States, *E. coli* O157:H7 was the second leading cause of foodborne diseases after *Salmonella* sp. in 1997; in this year, 3,260 cases of disease and eight deaths were attributed to this pathogen (CDC, 1997). *E. coli* O157:H7 can contaminate every product of animal origin and the environment (Kiranmayi et al., 2010; WHO, 2020). In Indonesia, *E. coli* O157:H7 was observed in beef, fresh and pasteurized milk, water samples, the hands of slaughterhouse and dairy workers, and beef traders (Sartika et al., 2005; Cho et al., 2020; Emara et al., 2016). Generally, the multiplex polymerase chain reaction (multiplex PCR) method can rapidly and reliably identify foodborne agents, such as *E. coli* O157:H7 and other diarrheagenic *E. coli*, in a sustainable manner (Nguyen et al., 2016; Ibrahim et al., 2016; Taha and Yassin, 2019). Multiplex PCR is known to detect six main types of virulence factors found in *E. coli* O157:H7, namely, the *fliC*, *stx1*, *stx2*, *eae*, *rfbE*, and *hlyA* genes (Bai et al., 2010). The technique has also been used to detect the Z3276, a unique target gene of *E. coli* O157:H7, (Li et al., 2017).

While going through the literature, it was observed that studies are lacking on the foodborne pathogens, especially *E. coli* O157:H7, in beef that sold in traditional markets in the Yogyakarta Special Province, Indonesia. Thus this study aimed the rapid detection of four major virulence genes, *eae*, *fliC*, *rfbE*, and *stx2A* in *E. coli* O157:H7 isolated from beef that was being sold in the traditional markets in

the Yogyakarta Special Province, Indonesia, using the multiplex PCR. The present research is expected to support the government's efforts to improve food safety and provide a sense of security when consuming food products from animals, especially beef. Moreover, this survey results can assist researchers in detecting *E. coli* O157:H7 rapidly and effectively and highlight the need to process beef properly to prevent foodborne disease.

## MATERIALS AND METHODS

### ETHICAL APPROVAL

This study used beef samples and bacterial isolates thus no ethical approval was needed.

### COLLECTION AND PREPARATION OF BEEF SAMPLES

Beef samples were obtained from traditional markets in Yogyakarta City, including the Beringharjo, Kranggan, Ngasem, Demangan, Lempuyangan, and Serangan markets. Beef samples (approximately 100 g) were collected aseptically from sellers and packed and labeled in sterile plastic bags. The samples were transported in ice boxes containing ice gel to the Veterinary Public Health Laboratory, Faculty of Veterinary Medicine, Universitas Gadjah Mada. The number of beef samples to be tested was determined according to the formula of Martin et al. (1987). Based on an estimated prevalence of 5.62% (Suardana et al., 2007) with a desired error of 5%, the number of samples required for testing with a confidence level of 95% were a minimum of 85 samples. Thus, a total of 98 samples were collected and analyzed in this study.

### ISOLATION AND IDENTIFICATION OF *ESCHERICHIA COLI*

The bacterial isolation procedure in this study referred to Suardana et al. (2007). Each sample was aseptically removed and placed in a sterile plastic bag containing a peptone buffer solution (Conda CAT: 1403.00) at a ratio of 1:9. The plastic was then placed in a stomacher for 60 sec. Peptone buffer rinsing solution was used to isolate *E. coli*. Up to 100 µl of this rinsing solution was cultured on eosin methylene blue agar (EMBA) medium (Oxoid CM0069) via the spreading method. The culture was incubated at 37 °C for 24 h. *E. coli* colonies were identified by their metallic green sheen and a black spot in the middle of a colony. Colonies positive for *E. coli* in the EMBA medium were then stored in liquid brain heart infusion (BHI) medium (Conda CAT: 1400.00) added with glycerol for further analysis.

Positive isolates on the EMBA media were then cultured in selective sorbitol MacConkey agar (SMAC) medium (Oxoid CM 0813). After incubation at 37 °C for 24 h, sorbitol-negative *E. coli* colonies were identified via their clear and colorless appearance and then stored in liquid

**Table 1:** Primers used to detect four major virulence genes in *E. coli* O157:H7 and non-O157 *E. coli*

Primer	Primer sequence (5'-3')	Target genes (product size)	Reference
FLICH7 F	GCG CTG TCG AGT TCT ATC GAG C	<i>fliC</i> (625 bp)	(Al-Ajmi et al., 2006)
FLICH7 R	CAA CGG TGA CTT TAT CGC CAT TCC		
rfbE-F	TCT TTC CTC TGC GGT CCT A	<i>rfbE</i> (317 bp)	(Suria et al., 2013)
rfbE-R	CAG GTG AAG GTG GAA TGG T		
stx2A-F	CGA GGG CTT GAT GTC TAT CAG	<i>stx2A</i> (553 bp)	(Park et al., 2006)
stx2A-R	TCA GTA TAA CGG CCA CAG TCC		
eae-F	CAT TAT GGA ACG GCA GAG GT	<i>eae</i> (375 bp)	(Bai et al., 2010)
eae-R	ACG GAT ATC GAA GCC ATT TG		

**Table 2:** Biochemical tests results of *Escherichia coli* isolates.

No.	Sample code	Tests									Gram staining
		Glucose	Lactose	Mannitol	Maltose	Sucrose	Sulfur	Indole	Motility	Simmons citrate	
1	D1	+	+	+	+	+	-	+	+	-	Negative coccobacilli
2	D2	+	+	+	+	-	-	+	+	-	Negative rod
3	KR9	+	+	+	+	+	-	+	+	-	Short Negative rod
4	B6	+	+	+	+	+	-	+	+	-	Short Negative rod
5	B4	+	+	+	+	+	-	+	+	-	Negative coccobacilli
6	B3	+	+	+	+	+	-	+	+	-	Negative coccobacilli
7	B2	+	+	+	+	-	-	+	+	-	Negative coccobacilli
8	B7-2	+	+	+	+	+	-	+	+	-	Short Negative rod
9	B12-2	+	+	+	+	+	-	+	+	-	Short negative rod
10	B8-3	+	+	+	+	+	-	-	+	-	Negative coccobacilli
11	B14-3	+	+	+	+	+	-	+	+	-	Negative coccobacilli
12	B3-3	+	+	+	+	+	-	+	+	-	Negative coccobacilli
13	B12-3	+	+	+	+	+	-	-	+	-	Negative coccobacilli
14	B16-2	+	+	+	+	+	-	+	+	-	Negative coccobacilli
15	KR8-2	+	+	+	+	-	-	+	+	-	Negative coccobacilli
16	KR1-2	+	+	+	+	+	-	+	+	-	Negative coccobacilli
17	KR3-2	+	+	+	+	+	-	+	+	-	Negative coccobacilli
18	KR1-3	+	+	+	+	+	-	+	+	-	Negative coccobacilli

19	N2	+	+	+	+	+	-	+	+	-	Negative rod
20	D1-2	+	+	+	+	+	-	+	+	-	Negative rod
21	D2-2	+	+	+	+	+	-	+	+	-	Negative rod
22	D4-2	+	+	+	+	+	-	+	+	-	Negative rod
23	D1-3	+	+	+	+	+	-	+	+	-	Negative rod
24	D4-3	+	+	+	+	+	-	+	+	-	Negative rod
25	N1-2	+	+	+	+	+	-	+	+	-	Negative rod
26	N2-2	+	+	+	+	+	-	+	+	-	Negative rod
27	N2-3	+	+	+	+	+	-	+	+	-	Negative rod
28	L2-2	+	+	+	+	+	-	+	+	-	Negative rod

+: positive; -: negative

BHI medium added with glycerol for further analysis. Gram staining to differentiate bacteria as Gram-negative or -positive and biochemical tests, including glucose, lactose, mannitol, maltose, sucrose, sulfur, indole, motility, and Simmons citrate tests, were subsequently carried out.

### DNA EXTRACTION

DNA extraction was carried out using a Presto™ Mini gDNA Bacteria Kit (Geneaid GBB300) according to the manufacturer's instructions. First, bacterial cells were centrifuged at 14,000 rpm for 1 min. Then, the supernatant was discarded, and the cell pellet was resuspended in 180 µl of GT buffer and vortexed. The cell pellet was mixed with 20 µl of proteinase K and incubated at 60 °C for 10 min with inversion every 3 min. Next, the solution was added with 200 µl of GB buffer, mixed for 10 sec, and then incubated at 70 °C for 10 min with inversion every 3 min.

The required elution buffer was heated to 70 °C and then added with 200 µl of absolute ethanol and mixed. This solution was transferred to the GD column and centrifuged at 14,000 rpm for 2 min. The collection tube was discarded, and the solution was added with 400 µl of W1 buffer and centrifuged at 14,000 rpm for 30 sec. The supernatant was discarded once more, and the cell pellet was added with 600 µl of wash buffer and centrifuged at 14,000 rpm for 30 sec. This process was repeated one more time. Finally, the column was transferred to a microcentrifuge tube, added with 100 µl of pre-heated elution buffer, allowed to stand for 3 min, and then centrifuged at 14,000 rpm for 30 sec. The suspension was used for target DNA in molecular analysis.

### MULTIPLEX PCR STANDARDIZATION FOR *E. COLI* O157:H7 DETECTION

Multiplex PCR standardization was performed to detect different *E. coli* species. Each reaction mixture contained 2 µl of the DNA templates, 1 µl each of the forward and reverse primers, and 12.5 µl of MyTaq™ HS Red Mix (Cat. No.: BIO-25048). UltraPure™ ddH<sub>2</sub>O (Cat. No.:

10977015) was added to achieve a total volume of 25 µl. The reaction mixture was vortexed until a homogeneous solution was obtained and amplified using a personal MasterCycler. Primers derived from the *eae*, *fliC*, *rfbE*, and *stx2A* genes were obtained from IDT™ (Table 1) to detect *E. coli* O157:H7. Amplification was carried out on a gradient PCR machine at annealing temperatures of 50, 51, 52, 53, 54, 55, 56, 57, 58, 59, 60, and 61 °C simultaneously. PCR amplification was carried out as follows: initial denaturation at 94 °C for 5 min; 40 cycles of denaturation at 94 °C for 45 sec for, annealing at 50 °C to 61 °C for 30 sec, and extension at 72 °C for 45 sec; final extension at 72 °C for 10 min. Approximately 5 µl of the amplification result was analyzed by gel electrophoresis (1.5% agarose gel stained with SYBR® Safe) in 1× TBE solution. The gel was visualized with a UV transilluminator and photographed by a digital camera.

### DETECTION OF NON-O157 *E. COLI*

The target genes selected for non-O157 *E. coli* detection were the *eae*, *fliC*, and *rfbE* genes. Primers derived from the *eae*, *fliC*, and *rfbE* genes were obtained from IDT™ (Table 1) to detect non-O157 *E. coli*. The reaction mixture contained 2 µl of the DNA template, 1 µl each of the forward and reverse primers, and 12.5 µl MyTaq™ HS Red Mix (Cat No.: BIO-25048). UltraPure™ DNase/RNase-free distilled water (Cat No.: 10977015) was added to achieve a total volume of 25 µl. PCR amplification was carried out as follows: initial denaturation at 94 °C for 5 min; 40 cycles of denaturation at 94 °C for 45 sec, annealing at 54 °C for 30 sec, and extension at 72 °C for 45 sec; final extension at 72 °C for 10 min. Approximately 5 µl of the amplification result was analyzed by gel electrophoresis (1.5% agarose gel stained with SYBR® Safe) in a 1× TBE solution. The gel was visualized with a UV transilluminator and photographed using a digital camera.

### STATISTICAL ANALYSIS

Data obtained from the study were analyzed descriptively using the Microsoft Word and presented as tables and figures.

MULTIPLEX PCR STANDARDIZATION FOR DETECTION THE *EAE*, *FLIC*, *RFB*, AND *STX2A* GENES OF *E. COLI* O157:H7

OCCURRENCE OF *ESCHERICHIA COLI* IN MEAT SAMPLES

The results of the microbiological investigation of *E. coli* are shown in Figure 1. Colonies showing a green metallic sheen with a black spot in the middle were identified on EMBA medium as *E. coli*. In this study, out of 98 beef samples 83 (84.69%) were positive for *E. coli*. Subsequently, 28 samples (D1, D2, KR9, B6, B9, B4, B3, B2, B7-2, B12-2, B8-3, B14-3, B3-3, B12-3, B16-2, KR8-2, KR1-2, KR3-2, KR1-3, N2, D1-2, D2-2, D4-2, D1-3, D4-3, N1-2, N2-2, N2-3, and L2-2) were tested as a presumption to indicate *E. coli* O157 on SMAC medium. *E. coli* colonies that do not ferment sorbitol were characterized by a clear or colorless appearance, as shown in Figure 2. The positive control isolate of *E. coli* O157:H7 showed the same results when cultured on EMBA and SMAC media. *E. coli* is characterized by its pink colonies and short rod-shaped structure during Gram staining. *E. coli* also showed positive results in the glucose, lactose, mannitol, maltose, sucrose, and indole tests but negative results in the Simmons citrate test. The results of biochemical tests proved the presence of *E. coli*. The results of biochemical tests on 28 isolates were presumed to be *E. coli* O157 listed in Table 2.

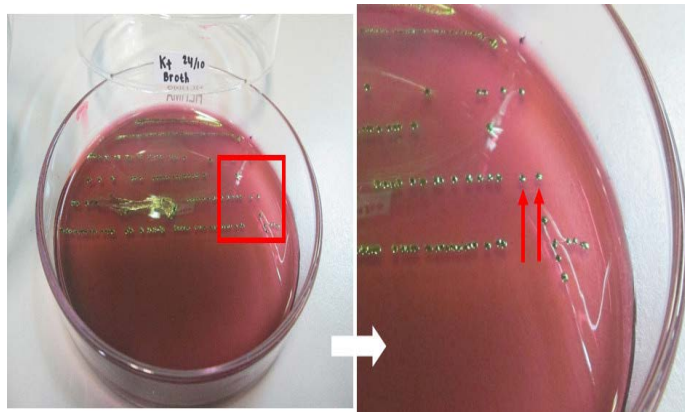


Figure 1: *Escherichia coli*-positive control isolate culture on EMBA medium. The red arrow indicates the colonies.

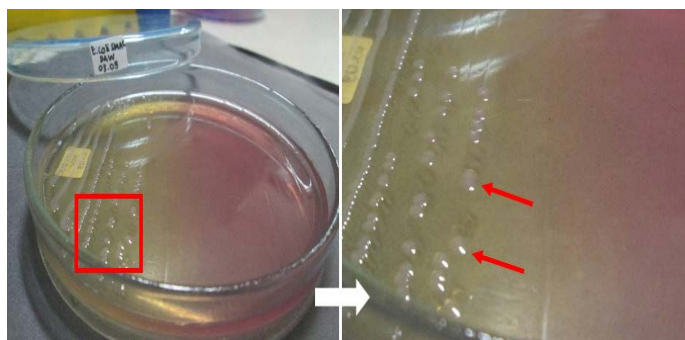


Figure 2: *Escherichia coli* O157-positive control isolate culture on SMAC medium. The red arrow indicates the colonies.

The multiplex PCR protocol was carried out as described under materials and methods. The results of multiplex PCR optimization using a positive control isolate of *E. coli* O157:H7 with two target genes are shown in Figure 3. The multiplex PCR was carried out using two target genes simultaneously, namely, *fliC* and *rfbE*, with product sizes of 625 and 317 bp, respectively. The DNA bands of the two target genes was found according to their product size at different annealing temperatures. Well numbers 1 to 12 in the Figure-3 showed the resultant DNA bands in annealing temperature used from 50 to 61 °C.

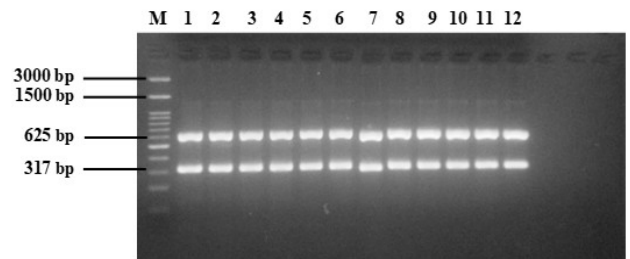


Figure 3: Multiplex PCR optimization of *E. coli* O157:H7 with two target genes (*fliC*, 625 bp; *rfbE*, 317 bp). M = 100 bp DNA marker, 1 to 12 = annealing temperatures 50 to 61 °C.

The next round of optimization was carried out using four target genes, namely, *eae*, *fliC*, *rfbE*, and *stx2A*, which have product sizes of 375, 625, 317, and 553 bp, respectively. The results of multiplex PCR optimization with four target genes are shown in Figure 4. The DNA bands of the four target genes was found according to their product size at different annealing temperatures. Well numbers 1 to 12 in the figure-4 showed the resultant DNA bands in annealing temperature used from 50 to 61 °C.

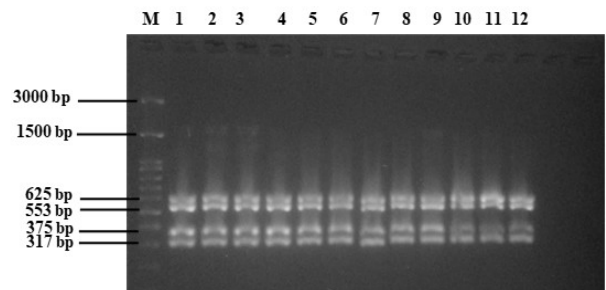
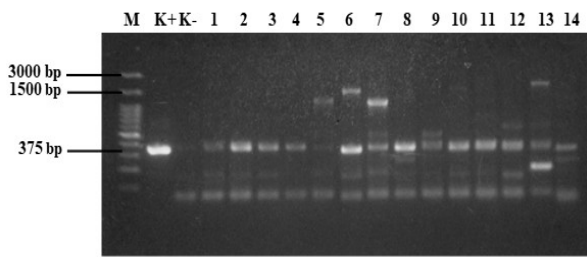


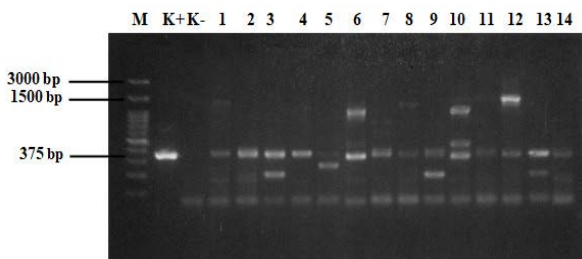
Figure 4: Multiplex PCR standardization *E. coli* O157:H7 with four target genes (*eae*, 375 bp; *fliC*, 625 bp; *rfbE*, 317 bp; *stx2A*, 553 bp). M = 100 bp DNA marker, 1 to 12 = annealing temperatures 50 to 61 °C.

**DETECTION THE *EAE*, *FLIC*, AND *RFB* GENES OF NON-O157 *E. COLI***

The standardized protocol was used to screen the field samples. The results of *eae* gene detection from 28 *E. coli* samples from beef are shown in Figures 5 and 6. The *fliC* and *rfbE* genes were also detected in these 28 samples, however no isolate had *rfbE* and *fliC* genes (data not shown). In this study, all tested *E. coli* isolates were positive for *eae* gene (100%). The *eae* gene produced DNA bands with a size of 375 bp. Our results indicated that the PCR method may differentially detected all three virulence genes, *eae*, *fliC*, and *rfbE*, in non-O157 serotypes.



**Figure 5:** PCR results of samples. M = 100 bp DNA marker, K+ = positive control, K- = negative control, 1 = D1, 2 = D2, 3 = KR9, 4 = B6, 5 = B4, 6 = B3, 7 = B2, 8 = B7-2, 9 = B12-2, 10 = B8-3, 11 = B14-3, 12 = B3-3, 13 = B12-3, and 14 = B16-2. Annealing temperature, 53 °C.



**Figure 6:** PCR results of samples. M = 100 bp DNA marker, K+ = positive control, K- = negative control, 1 = KR8-2, 2 = KR1-2, 3 = KR3-2, 4 = KR1-3, 5 = N2, 6 = D1-2, 7 = D2-2, 8 = D4-2, 9 = D1-3, 10 = D4-3, 11 = N1-2, 12 = N2-2, 13 = N2-3, and 14 = L2-2. Annealing temperature 53 °C.

**DISCUSSION**

*E. coli* O157: H7 is one of the strains of EHEC which was first identified as a human pathogen in 1982. At that time there were cases of hemorrhagic colitis in fast-food restaurants in Oregon and Michigan, United States (Fernandez, 2008; Besser et al., 1999). Since then, *E. coli* O157: H7 has been identified to be responsible for various outbreaks and sporadic cases around the world.

The results of bacteriological investigation of the beef sam-

ples revealed the 84.6% (83/98) meat samples had *E. coli*. On SMAC medium, 33.7% (28/83) of the samples presumed to be *E. coli* O157. Identification of 28 (33.7 %) *E. coli* isolates out of the 83 collected samples was confirmed by biochemical tests using standard bacteriological procedures. The 28 isolates were visualized as colonies with a green metallic sheen and a black spot in the middle of the colonies on EMBA medium, while bright pink or colorless colonies on SMAC medium. These findings indicated a presumptive identification of *E. coli* that was confirmed using standard bacteriological procedures.

The results of this study were higher than the findings of different authors. Zulfakar et al. (2017) reported that 53.3% (24/45) of the beef samples obtained from wet markets are contaminated by *E. coli*. Soepranianondo et al. (2019) showed that 32.5% (13/40) of the meat samples obtained from a slaughterhouse in East Java Province, Indonesia, were contaminated by *E. coli*. Carcasses are mainly contaminated with the microbes during slaughtering and processing in abattoirs. *E. coli* is commonly found in all environments, but some serotypes may be extremely harmful to humans. The prevalence of *E. coli* O157 and other than O serotype was recorded 30% and 41% in a study used 820 samples of beef carcasses obtained from abattoirs in Alberta, Canada (Manage et al., 2019). The study further proposed that this contamination in beef by STEC (most common cause of foodborne diseases) may occur during evisceration and handling procedures.

Multiplex PCR standardization was performed on positive control isolate of *E. coli* O157:H7. The results of the amplification of *fliC* and *rfbE* genes using PCR (Figure 3) revealed that the control isolate of *E. coli* O157:H7 had *fliC* and *rfbE* genes. In previous studies, the optimum annealing temperatures for the *fliC* and *rfbE* genes were found to be 58 °C (Al-Ajmi et al., 2006) and 57 °C (Suria et al., 2013), respectively. However, in the present study, we used gradient PCR, the optimum annealing temperatures for subsequent PCR included 52, 53, 54, and 55 °C (well 3 to 6 of Figure 3). Our findings confirmed the identity of isolates as *E. coli* O157:H7 and proved that *fliC* and *rfbE* genes were present in *E. coli* O157:H7 as reported by Bai et al. (2010). *rfbE* and *fliC* are genes encoding for the O157 somatic and H7 flagellar antigens respectively (Wang et al., 2002). Two sets of primers specifically designed to amplify the *fliC* and *rfbE* genes (O157 antigen) were observed only in the *E. coli* O157:H7 strain. The primer pair for the *E. coli* H7 *fliC* gene was highly specific for the H7 flagella antigen. Thus, only *E. coli* strains with alternative O antigen serotypes (e.g., O114:H7) could show positive results when analyzed via the multiplex PCR method (Al-Ajmi et al., 2006; Suria et al., 2013) using these primers. According to Botkin et al. (2012) the multiplex PCR method per-

mitted differentiation of EPEC (enteropathogenic *E. coli*), STEC, and EHEC strains from other pathogenic *E. coli*, therefore the assay becomes an additional tool for rapid diagnostic of these organisms.

The next cycle of multiplex PCR standardization was carried out by using four target genes. The target genes used were *eae*, *fliC*, *rfbE*, and *stx2A*, which have product sizes of 375, 625, 317, and 553 bp, respectively. The results of the amplification of *eae*, *fliC*, *rfbE*, and *stx2A* genes using PCR (Figure 4) revealed that the control isolate of *E. coli* O157:H7 showed positive result for the presence of these four genes. In previous studies, the optimal annealing temperatures for the *eae* and *stx2A* genes were 65 °C (Bai et al., 2010) and 61 °C (Park et al., 2006), respectively. However, in the present study, gradient PCR was employed, and the optimum annealing temperatures for subsequent PCR used 52 and 53 °C (wells 3 and 4 of Figure 4). The main virulence factor possessed by *E. coli* O157: H7 is related to its ability to produce Shiga-toxin (*stx*). *Stx* consists of two major groups, namely *stx1* and *stx2*, each group is divided into several subtypes, namely *stx1a*, *1c*, and *1d*; *stx2a* to *stx2e*. Not all *E. coli* O157: H7 isolates can produce both types of toxins. Some specific strains can produce both (*stx1* and *stx2*), but some strains only produce one type of toxin, *stx1* or *stx2* (Spickler, 2016). Strains that carry only the *stx2* gene are known to have higher pathogenicity. Intimine is produced by the *eae* gene, is an attaching and effacing gene (gene species-specific) for *E. coli* firmly attached to the intestine (*ehxA* gene) localizing high toxin levels that cause hemolytic disease (Manage et al., 2019). Strains that have the *eae* and *stx2* genes are known to be more pathogenic to humans and the *stx2* gene, in particular, is an important virulence factor associated with the causes of the hemolytic uremic syndrome and hemorrhagic colitis in humans (Kesaya et al., 2011). *E. coli* O157: H7 is most commonly found in ruminants. Widiasih et al. (2003) has proven that naturally infected cattle were known to be able to secrete the *stx1* and *stx2* genes through feces over a long time, therefore it has the potential to induce disease in humans. A singleplex PCR detecting *eae* gene was performed on *E. coli* isolated from beef. The results of the amplification of *eae* gene using PCR (Figure 5 and 6) revealed that all *E. coli* isolates showed positive result for the presence of *eae* gene, thus confirming their identity as pathogenic *E. coli*. The *eae* gene codes an adhesion protein called intimin, which attaches and removes microvilli on the surface of host cell enterocytes. The protein also plays an essential role on the pathogenicity of the EPEC pathotype of the bacteria (Xu et al., 2016). In order to detection the serotypes of pathogenic *E. coli*, multiplex PCR was used for detection of *rfbE* and *fliC* genes. No isolate had *rfbE* and *fliC* genes (data not shown). In this study, the *eae* gene produced DNA bands with a size of 375 bp and all positive

samples had the *eae* gene. Figure 5 shows that 14 samples tested positive for the *eae* gene but samples B4, B3, B2, B12-2, B3-3, and B12-3 (wells 5, 6, 7, 9, 12, and 13) also produced products that were not target genes. Figure 6 shows that 14 samples tested positive for the *eae* gene but samples D1-2, D4-2, D4-3, and N2-2 (wells 6, 8, 10, and 12) also produced DNA bands that were not the target gene. Bai et al. (2010), reported the 65 °C as the optimum annealing temperature for the *eae* gene. The optimum annealing temperature determined in this study was 53 °C because several DNA bands besides from the target gene were produced at 52 °C (data not shown). Further research needs to be done using a higher annealing temperature to determine the DNA bands produced.

Suardana et al. (2011), reported that 95% of clinical and non-clinical human, beef, cow feces, and chicken feces samples were positive for *eae* gene. The presence of the *eae* gene indicates that the *E. coli* isolates have an adhesion molecule called intimin. *E. coli* can colonize in the intestine, induce attaching and effacing (AE) lesions with the help of intimin, and cause a cytopathic effect on intestinal epithelial cells. The ability to induce AE lesions is encoded by pathogenicity islands, the locus of enterocyte effacement, which has genes involved in the formation of AE lesions. Intimin is a virulence factor of EPEC and EHEC *E. coli* strains (Al-Ajmi et al., 2006); thus, further research is necessary to ensure the type of pathotype.

## CONCLUSION

*E. coli* O157: H7 is a foodborne disease agent that is dangerous based on its virulence factors. Our results demonstrated that beef sold in the market of Yogyakarta Special Province, Indonesia is potentially contaminated by pathogenic *E. coli*. Thus vigorous attention and monitoring of consumers, veterinarians, and relevant stakeholders are needed to prevent foodborne diseases. Moreover, multiplex PCR was recognized as a valid and rapid method for detecting virulence genes in *E. coli*. This multiplex assay was shown to be effective for the detection of *E. coli* O157:H7 and screening for non-O157 strains in beef, and may be applied for other food matrices as well.

## AUTHORS CONTRIBUTIONS

AI, AH, IWS, and DAW designed the study. AI conducted the field surveys and analyzed samples. AH contributed to the PCR testing. IWS and DAW analyzed the data and coordinated the study. All authors read and approved the final manuscript.

The authors express their gratitude to The Directorate of Research and Community Service, Directorate General of Research and Development Strengthening, The Ministry of Research, Technology and Higher Education, Republic of Indonesia for funding this research under the 2019 PMDSU research grant scheme (Contract No. 2952/UN1.DITLIT/DIT-LIT/LT/2019).

## CONFLICT OF INTEREST

The authors declare that they have no conflict of interests.

## REFERENCES

- Al-Ajmi D, Padmanabha J, Denman SE, Gilbert RA, Al Jassim RAM, McSweeney CS (2006). Evaluation of a PCR detection method for *Escherichia coli* O157:H7/H– bovine faecal samples. *Lett Appl. Microbiol.* 42(4): 386 – 391. <https://doi.org/10.1111/j.1472-765X.2005.01850.x>
- Baehaqi KY, Putriningsih PAS, Suardana IW (2015). Isolation and identification of *Escherichia coli* O157:H7 on bali cattle at Abiansemal, Badung, Bali. *IMV.* 4(3): 267 – 278.
- Bai J, Shi X, Nagaraja TG (2010). A multiplex PCR procedure for the detection of six major virulence genes in *Escherichia coli* O157:H7. *J. Microbiol. Methods.* 82(1): 85 – 89. <https://doi.org/10.1016/j.mimet.2010.05.003>
- Besser RE, Griffin PM, Slutsker L (1999). *Escherichia coli* O157:H7 gastroenteritis and the hemolytic uremic syndrome: an emerging infectious disease. *Annu. Rev. Med.* 50:355–358. <https://doi.org/10.1146/annurev.med.50.1.355>
- Botkin DJ, Galli L, Sankarapani V, Soler M, Rivas M, Torres, AG (2012). Development of a multiplex PCR assay for detection of shiga toxin-producing *Escherichia coli*, enterohemorrhagic *E. coli*, and enteropathogenic *E. coli* strains. *Front. Cell. Infect. Microbiol.* 2:1 – 10. <https://doi.org/10.3389/fcimb.2012.00008>
- Center for Disease Control and Prevention (CDC) (1997). Human pathogens on the farm. *MMWR Morb Mortal Wkly Rep.* 42: 258 – 263.
- Center for Disease Control and Prevention (CDC) (2016). *Escherichia coli* (*E. coli*) factsheets. 1 – 2.
- Cho YS, Koo MS, Jang HJ (2020). Characterization of diarrheagenic *Escherichia coli* isolated from fresh beef, pork, and chicken meat in korean markets. *MBL.* 48(2):121 – 28 <https://doi.org/10.4014/mbl.1912.12005>.
- Emara NMA, Saad SM, El-Shatter MA (2016). Incidence of diarrheagenic *E. coli* in some meat products. *BJAS.* 1(2):33 – 38.
- Fernandez TF. (2008). *E. coli* O157:H7. *Vet. World.* 1(3): 83 – 87.
- Goma MKE, Indraswari A, Haryanto A, Widiasih DA (2019). Detection of *Escherichia coli* O157:H7 and Shiga toxin 2a gene in pork, pig feces, and clean water at Jagalan slaughterhouse in Surakarta, Central Java Province, Indonesia. *Vet. World.* 12(10): 1584 – 1590. <https://doi.org/10.14202/vetworld.2019.1584-1590>
- Hastuti YS, Suada IK, Suardana IW (2015). Risk factor of *Escherichia coli* O157:H7 infection on cattle at Mengwi, Badung, Bali. *IMV.* 4(5): 409 – 418.
- Ibrahim HB, Tchambal GB, Bagré TS, Boudal S, Fody A.M, Kagambéga A, Bonkoungou IJO, Tiendrebéogo F, Zongol C, Savadogol A, Traoré AS, Barrol N (2016). Characterization of diarrheagenic *Escherichia coli* isolated from raw beef, mutton, and intestines sold in Ouagadougou, Burkina Faso. *J. Microbiol. Biotechnol. Food Sci.* 5(5):470 – 74. <https://doi.org/10.15414/jmbfs.2016.5.5.470-474>
- Kesava NG, Rajendra GN, Gaddad SM, Shivannavar CT (2011). Detection of Shigatoxin genes (*stx1* & *stx2*) and molecular characterization of shiga-toxigenic *Escherichia coli* isolated from diverse sources in Gulbarga region, India. *Pharmacophore.* 2(5): 253 – 265.
- Kiranmayi ChB, Krishnaiah N, Mallika EN (2010). *Escherichia coli* O157:H7 - An emerging pathogen in foods of animal origin. *Vet. World.* 3(8): 382 – 389. <https://doi.org/10.5455/vetworld.2010.382-389>
- Li B, Liu H, Wang W (2017). Multiplex real-time PCR assay for detection of *Escherichia coli* O157:H7 and screening for non-O157 Shiga toxin-producing *E. coli*. *Methodology Article. BMC Microbiol.* 17(1): 215. <https://doi.org/10.1186/s12866-017-1123-2>
- Manage DP, Lauzon J, Jones CM, Ward PJ, Pilarski LM, Pilarski PM, McMullen LM (2019). Detection of pathogenic *Escherichia coli* on potentially contaminated beef carcasses using cassette PCR and conventional PCR. *BMC Microbiol.* 19(1): 175. <https://doi.org/10.1186/s12866-019-1541-4>
- Martin SW, Meek AH, Willeberg P (1987). *Veterinary Epidemiology: Principles and Methods.* Iowa State University Press, Iowa, USA. 32 – 33.
- Nataro JP, Kaper JB (1998). Diarrheagenic *Escherichia coli*. *Clin. Microbiol. Rev.* 11(1): 144. <https://doi.org/10.1128/CMR.11.1.142>
- Nguyen TT, Giau VV, Vo TK (2016). Multiplex PCR for simultaneous identification of *E. coli* O157:H7, *Salmonella* spp. and *L. monocytogenes* in food. *3 Biotech.* 6: 1 – 9. <https://doi.org/10.1007/s13205-016-0523-6>
- Park YS, Lee SR, Kim YG (2006). Detection of *Escherichia coli* O157:H7, *Salmonella* spp., *Staphylococcus aureus* and *Listeria monocytogenes* in kimchi by Multiplex Polymerase Chain Reaction (mPCR). *J. Microbiol.* 44(1): 92 – 97. <https://doi.org/10.1016/j.febslet.2006.10.054>
- Rinca KF, Nindhia TS, Suardana IW (2016). Risk factors for dissemination of *Escherichia coli* O157:H7 in Balin cattle in South Kuta, Badung, Bali. *J. Vet.* 17(3): 374 – 382. <https://doi.org/10.19087/jveteriner.2016.17.3.374>
- Sartika RAD, Indrawani YM, Sudiarti T (2005). Microbiological analysis of *Escherichia coli* O157:H7 on cow's products during the production process. *Makara J. Health Res.* 9(1): 23 –24. <https://doi.org/10.7454/msk.v9i1.365>.
- Soepranianondo K, Wardhana DK, Budiarto, Diyantoro (2019). Analysis of bacterial contamination and antibiotic residue of beef meat from city slaughterhouses in east Java Province, Indonesia. *Vet. World.* 12(2): 243.–.248. <https://doi.org/10.14202/vetworld.2019.243-248>
- Spickler AR (2016). Enterohemorrhagic *Escherichia coli* Infections. Available from: <http://www.cfsph.iastate.edu/DiseaseInfo/factsheets.php>. Accessed on 17 December 2019.
- Suardana IW, Artama WT, Asmara W, Daryono BS (2010). Identification of *Escherichia coli* O157: H7 and detection of shiga like toxin 1 and 2 genes from animal feces beef, and human feces. *J. Vet.* 11(4): 264 – 267.
- Suardana IW, Artama WT, Asmara W, Daryono BS (2011).



- Adherence pheno-genotypic of *Escherichia coli* O157:H7 isolated from beef, feces of cattle, chicken and human. *J. Biotechnol.* 16(1): 46 – 52.
- Suardana IW, Sumiarto B, Lukman DW (2007). Isolation and identification *Escherichia coli* O157:H7 on beef at Badung Regency Province of Bali. *J. Vet.* 8(1): 16 – 23.
  - Suardana IW, Widiasih DA, Mahardika IG, Pinatih KJP, Daryono BS (2015). Evaluation of zoonotic potency of *Escherichia coli* O157:H7 through arbitrarily primed PCR methods. *Asian Pac. J. Trop. Biomed.* 5(11): 915 – 920. <https://doi.org/10.1016/j.apjtb.2015.07.023>
  - Suria MS, Adlin Azlina AK, Mohd Afendy AT, Zamri I (2013). Multiplex polymerase chain reaction (PCR) efficiency in detection of pathogenic *Escherichia coli* O157:H7. *Int. Food Res. J.* 20(6): 3307 – 3311.
  - Taha ZM, Yassin NA (2019). Prevalence of diarrheagenic *Escherichia coli* in animal products in Duhok Province, Iraq. *Iran J. Vet. Res.* 20(4):255 – 62.
  - Tseng M, Fratamico PM, Manning SD, Funk JA (2014). Shiga toxin-producing *Escherichia coli* in swine: the public health perspective. *Anim. Health Res. Rev.* 15(1): 63 – 75. <https://doi.org/10.1017/S1466252313000170>
  - Wang G, Clark CG, Rodgers FG (2002). Detection in *Escherichia coli* of the genes encoding the major virulence factors, the genes defining the O157:H7 serotype, and components of the type 2 Shiga toxin family by multiplex PCR. *J. Clin. Microbiol.* 40(10): 3613 – 3619. <https://doi.org/10.1128/JCM.40.10.3613-3619.2002>
  - Widiasih DA, Ido N, Omoe K, Sugii S, Shinagawa K (2003). Duration and magnitude of faecal shedding of shiga toxin-producing *Escherichia coli* from naturally infected cattle. *Epidemiol. Infect.* 132: 67 – 75. <https://doi.org/10.1017/S0950268803001468>
  - World Health Organization (WHO) (2020). *E. coli*. Available from: <https://www.who.int/news-room/fact-sheets/detail/e-coli>. Accessed on 17 November 2020.
  - Xu Y, Bai X, Zhao A, Zhang W, Ba P, Liu K, Jin Y, Wang H, Guo Q, Sun H, Xu J, Xiong Y (2016). Genetic diversity of intimin gene of atypical enteropathogenic *Escherichia coli* isolated from human, animals and raw meats in China. *PLOS ONE.* 11(3): e0152571. <https://doi.org/10.1371/journal.pone.0152571>
  - Zufakar SS, Baharudin N, Bakar NFA (2017). Bacterial contamination on beef sold at selected wet markets in Selangor and Kuala Lumpur. *JAS.* 9(13): 89 – 95. <https://doi.org/10.5539/jas.v9n13p89>