

Research Article

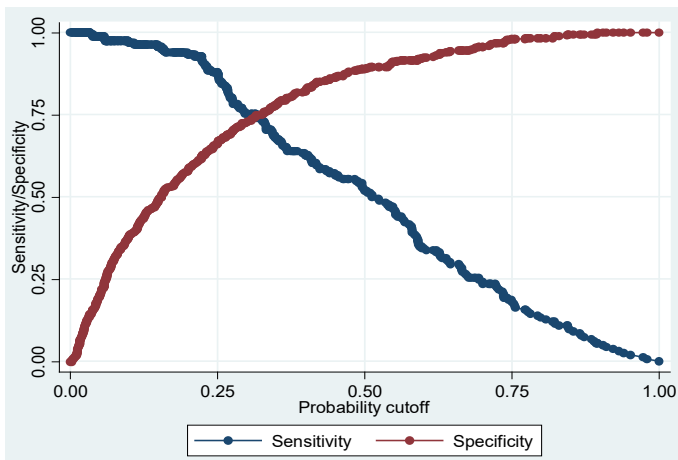


# Correlates of Poverty in Azad Jammu and Kashmir: A Logit Analysis

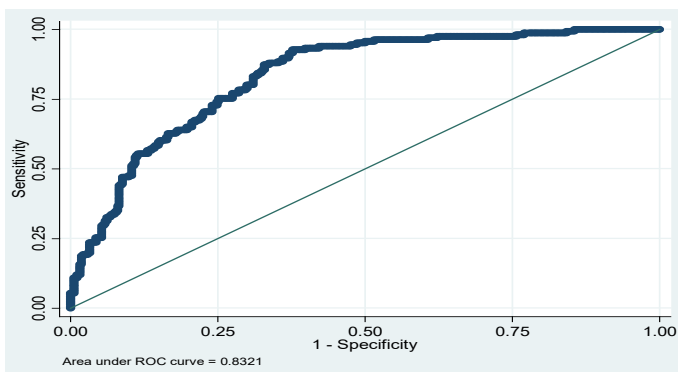
Gulnaz Hameed<sup>1</sup>, Abdul Saboor<sup>1</sup>, Khuram Nawaz Sadozai<sup>2\*</sup>, Ghaffar Ali<sup>2</sup>, Dawood Jan<sup>2</sup> and Mansoor Rasheed<sup>3</sup>

<sup>1</sup>Department of Economics, PMAS Arid Agriculture University, Rawalpindi, Pakistan; <sup>2</sup>Department of Agricultural and Applied Economics, The University of Agriculture, Peshawar, Khyber Pakhtunkhwa, Pakistan; <sup>3</sup>Department of Agricultural Economics, Balochistan Agriculture College, Quetta, Pakistan.

**Received** | February 03, 2019; **Accepted** | February 26, 2020; **Published** | April 28, 2020  
**\*Correspondence** | Khuram Nawaz Sadozai, Department of Agricultural and Applied Economics, The University of Agriculture, Peshawar, Khyber Pakhtunkhwa, Pakistan; **Email:** ksadozai@aup.edu.pk  
**Citation** | Hameed, G., A. Saboor, K.N. Sadozai, G. Ali, D. Jan and M. Rasheed. 2020. Correlates of poverty in Azad Jammu and Kashmir: A logit analysis. *Sarhad Journal of Agriculture*, 36(2): 593-602.  
**DOI** | <http://dx.doi.org/10.17582/journal.sja/2020/36.2.593.602>  
**Keywords** | Correlates, Poverty, Logit, Community development program



Supplementary Figure 1: Sensitivity curve.



Supplementary Figure 2: Sensitivity curve.

Supplementary Table 1: Tests for multicollinearity.

Variable	VIF	Tolerance	R-Squared
HHH works in public sector	1.71	0.59	0.41
HHH works in private sector	1.64	0.61	0.39
Number of livestock	1.1	0.91	0.09
Number of assets	1.45	0.69	0.31
Age of HHH	1.24	0.80	0.20
Total cultivated area	1.41	0.71	0.29
Female does some job	1.19	0.84	0.16
HH size	1.83	0.55	0.45
Presence of school	1.05	0.95	0.05
Presence of First Aid	1.03	0.97	0.03
Age of HHH Squared	1.21	0.82	0.18
HH Size Squared	1.29	0.78	0.22
Interaction between education of HHH and intervention	1.46	0.69	0.31
Intervention	1.64	0.61	0.39

**Supplementary Table 2: Correlation matrix.**

	pub	pri	livest* k	sum	Q7_13	Q9_4b	Q26_7b	Q5b	intrvntn	interac	cen_ag* q	Q20_1b	Q21b	cen_sizes q
pub	1													
pri	-0.61	1												
livestock	-0.13	0.1	1											
sum	-0.02	-0.01	0.0105	1										
Q7_13	-0.13	0.05	0.04	-0.07	1									
Q9_4b	-0.06	0.07	0.18	-0.12	0.21	1								
Q26_7b	0.05	-0.04	-0.03	0.23	-0.08	-0.26	1							
Q5b	-0.09	0.04	0.06	-0.09	0.32	0.11	-0.15	1						
intrvntn	0.02	0.03	0.14	0.06	0.02	0.03	-0.03	0.03	1					
interac	-0.07	0.04	0.08	-0.04	0.01	-0.06	0.02	0.07	-0.02	1				
cen_ag* q	0.03	0.03	-0.03	-0.06	0.15	0.05	-0.09	-0.07	0.03	0.01	1			
Q20_1b	-0.05	-0.05	0.07	0.38	-0.02	0.03	-0.09	0.05	0.13	-0.06	-0.11	1		
Q21b	0.10	-0.09	-0.04	0.33	0.07	0.32	0.04	-0.02	0.01	-0.06	-0.16	0.23	1	
cen_sizes q	0.02	-0.01	0.00	-0.07	0.13	-0.02	-0.05	0.56	0.09	0.05	0.18	0.00	-0.04	1

**Supplementary Table 3: Unidimensional poverty estimates of respondents.**

Category	Year 2015-16		
	H <sub>0</sub>	H <sub>1</sub>	H <sub>2</sub>
Registered	0.27	0.28	0.04
Non-Registered	0.33	0.30	0.04