

Supplementary Material

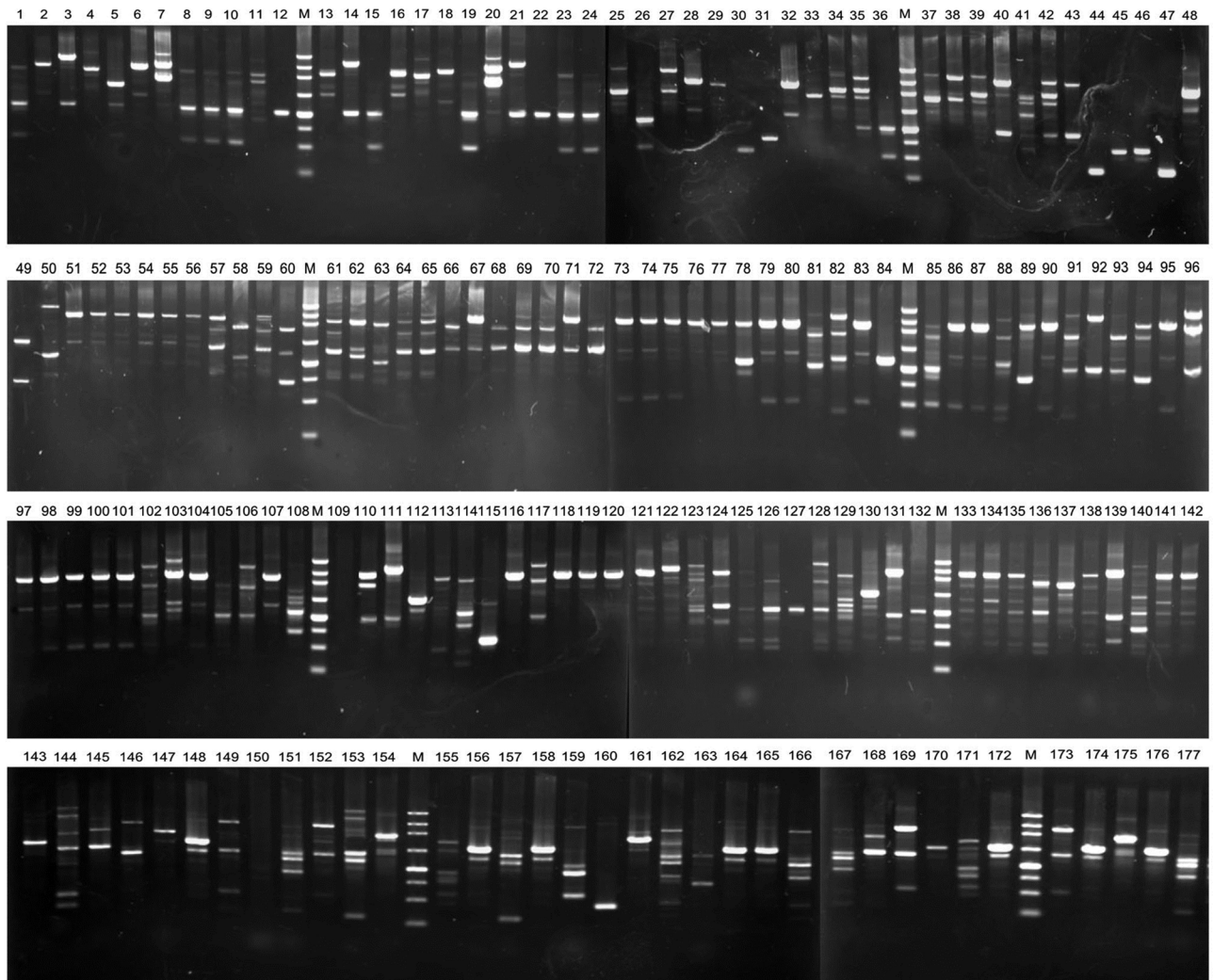
Genetic Polymorphisms of *Staphylococcus aureus* Isolated from Bovine Mastitis in China

Zhongyong Wu¹, Wenzhu Li², Chunxia Ni¹, Zhuolin He¹, Xiao Hou¹ and Wanxia Pu^{1*}

¹Key Laboratory of New Animal Drug Project, Gansu Province/ Key Laboratory of Veterinary Pharmaceutics Discovery, Ministry of Agriculture and Rural Affairs/ Lanzhou Institute of Husbandry and Pharmaceutical Sciences of CAAS, Lanzhou, P. R. Chin

²Qilihe District People's Hospital of Lanzhou

* Corresponding author: puwanxia@caas.cn
0030-9923/2021/0006-2417 \$ 9.00/0
Copyright 2021 Zoological Society of Pakistan



Supplementary Fig. S1. RAPD-PCR profiles of 177 *S. aureus* strains amplified with primer 4M

M: DNA marker; from top to bottom: 4,500 bp, 3,000 bp, 2,250 bp, 1,500 bp, 1,000 bp, 750 bp, 500 bp, and 250 bp.

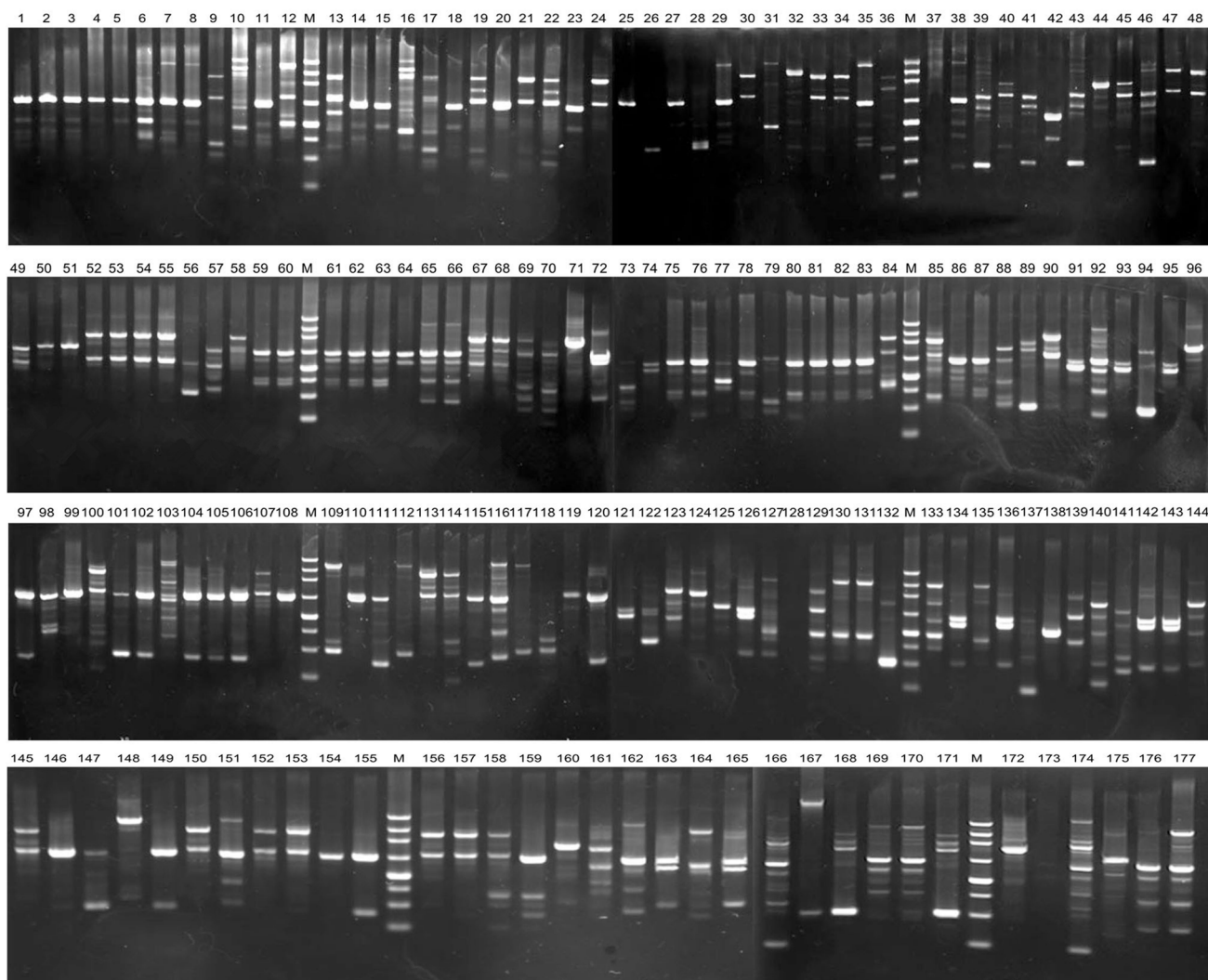
Not amplified strains: 109=ZY-29, 150=NY-92

Line 1-48: SH-22, SH-33, SH-51, SH-24, SH-32, SH-11, SH-04, SH-21, SH-20, SH-17, SH-85, SH-89, marker, SH-49, SH-31, SH-25, SH-67, SH-45, SH-68, SH-83, SH-98, SH-44, SH-69, SH-61, SH-06, SH-26, SH-13, SH-59, SH-36, SH-37, SH-02, SH-14, SH-34, SH-28, SH-15, SH-70, SH-56, marker, SH-35, SH-05, SH-58, SH-99, SX-14, SX-41, SX-45, SX-32, SX-63, SX-42, SX-79, SX-16

Line 49-96: SX-09, SX-78, SX-58, SX-15, SX-35, SX-83, SX-53, SX-97, QY-01, QY-05, QY-03, QY-25, marker, QY-04, QY-17, QY-08, QY-15, QY-14, QY-21, HG-20, HG-45, HG-13, HG-34, HG-38, HG-10, ZY-11, ZY-05, ZY-12, ZY-50, ZY-16, ZY-42, ZY-54, ZY-57, ZY-30, ZY-19, ZY-40, ZY-43, marker, ZY-37, ZY-09, ZY-48, ZY-51, ZY-25, ZY-63, ZY-27, ZY-53, ZY-22, ZY-65, ZY-21, ZY-32

Line 97-142: ZY-47, ZY-31, ZY-68, ZY-45, ZY-49, ZY-62, ZY-07, ZY-17, ZY-18, ZY-56, ZY-64, ZY-55, marker, ZY-29, ZY-60, CX-30, CX-10, CX-42, CX-38, CX-12, CX-47, CX-22, CX-01, CX-39, CX-11, CX-46, CX-40; CX-20, CX-32, CX-26, CX-18, CX-24, CX-06, CX-31, CX-33, KY-29, KY-06, marker, KY-04, KY-15, KY-37, KY-27, KY-42, KY-22, KY-39, KY-14, KY-33, CVCC2246

Line 143-177: NY-04, NY-72, NY-05, NY-70, NY-53, NY-08, NY-15, NY-92, NY-24, NY-01, NY-33, NY-25, marker, NY-39, NY-10, NY-40, NY-09, NY-22, NY-77, NY-38, NY-96, NY-55, NY-17, NY-13, NY-21, NY-76, NY-61, NY-91, NY-18, NY-89, NY-74, marker, NY-19, NY-03, NY-27, NY-50, NY-36



Supplementary Fig. S2. RAPD-PCR profiles of 177 strains of *S. aureus* amplified with primer AP7

M: DNA marker; from top to bottom: 4,500 bp, 3,000bp, 2,250 bp, 1,500bp, 1,000bp, 750 bp, 500 bp, and 250 bp.

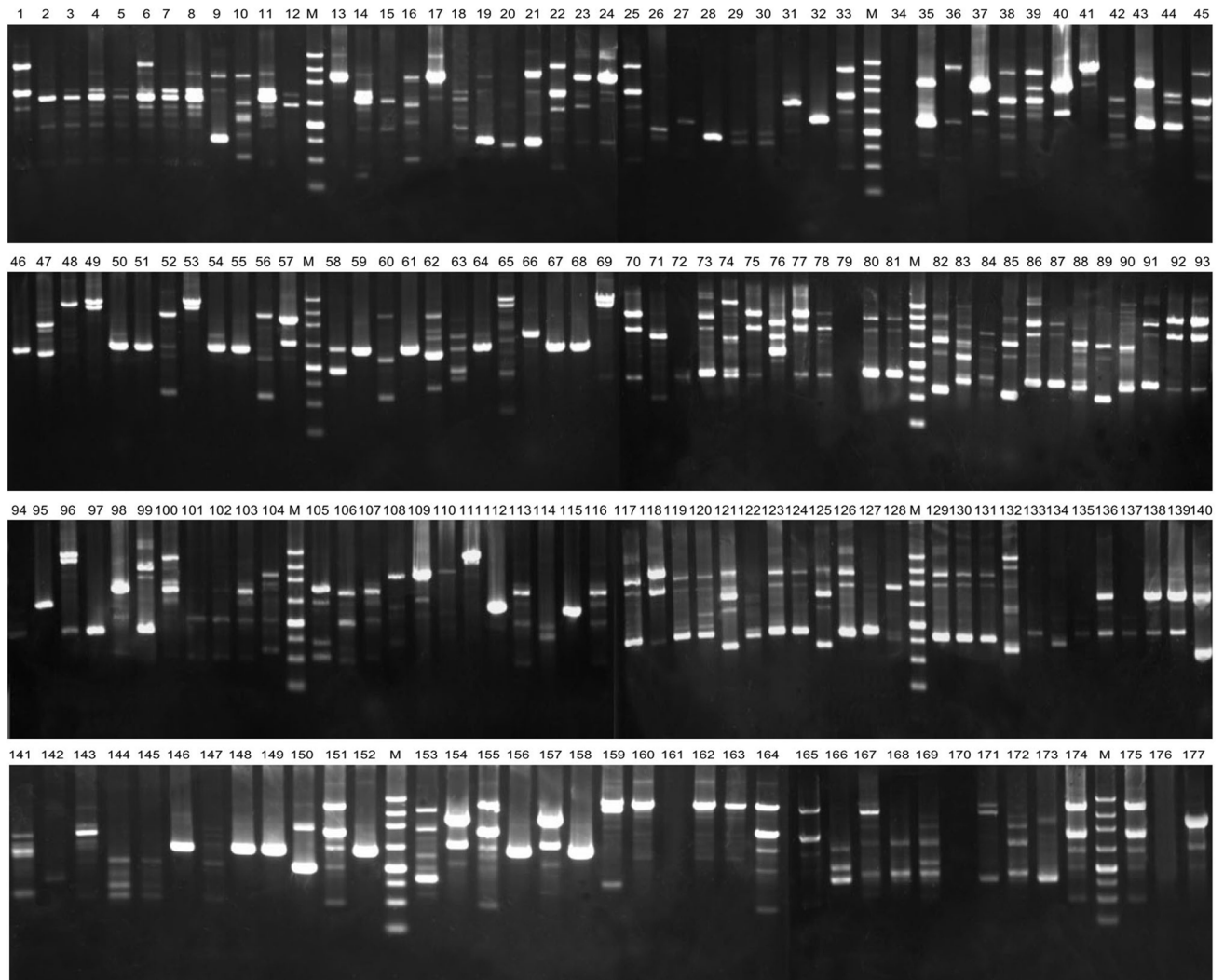
Not amplified strains: 35=ZY-29, 128=NY-92, 173=KY-22

Line 1-48: ZY-11, ZY-05, ZY-12, ZY-50, ZY-16, ZY-42, ZY-54, ZY-57, ZY-30, ZY-19, ZY-40, ZY-43, marker, ZY-37, ZY-09, ZY-48, ZY-51, ZY-25, ZY-63, ZY-27, ZY-53, ZY-22, ZY-65, ZY-21, ZY-32, ZY-47, ZY-31, ZY-68, ZY-45, ZY-49, ZY-62, ZY-07, ZY-17, ZY-18, ZY-56, ZY-29, ZY-55, marker, ZY-64, ZY-60, QY-01, QY-05, QY-03, QY-25, QY-04, QY-17, QY-08, QY-15, QY-14, QY-21

Line 49-96: SX-14, SX-41, SX-45, SX-32, SX-63, SX-42, SX-79, SX-16, SX-09, SX-78, SX-58, SX-15, marker, SX-35, SX-83, SX-53, SX-97, HG-20, HG-45, HG-13, HG-34, HG-38, HG-10, CX-31, CX-33, CX-30, CX-10, CX-42, CX-38, CX-12, CX-47, CX-22, CX-01, CX-39, CX-11, CX-46, CX-40, marker, CX-20, CX-32, CX-26, CX-18, CX-24, CX-06, NY-74, NY-19, NY-03, NY-27, NY-50, NY-36

Line 97-144: SH-22, SH-33, SH-51, SH-28, SH-32, SH-11, SH-04, SH-21, SH-20, SH-17, SH-85, SH-89, marker, SH-49, SH-31, SH-25, SH-67, SH-45, SH-68, SH-83, SH-98, SH-44, SH-69, SH-61, SH-06, NY-04, NY-72, NY-05, NY-70, NY-53, NY-08, NY-15, NY-92, NY-24, NY-01, NY-33, NY-25, marker, NY-39, NY-10, NY-40, NY-09, NY-22, NY-77, NY-38, NY-96, NY-55, NY-17, NY-13, NY-21

Line 145-177: SH-26, SH-13, SH-59, SH-36, SH-37, SH-02, SH-14, SH-34, SH-24, SH-15, SH-70, marker, SH-56; SH-35, SH-05, SH-58, SH-99, NY-76, NY-61, NY-91, NY-18, NY-89, KY-29, KY-06, KY-04, KY-15, KY-37, KY-27, marker, KY-42, KY-22, KY-39, KY-14, KY-33, CVCC2246



Supplementary Fig. S3. RAPD-PCR profiles of amplification from 177 strains *S. aureus* with primer OLP13

M: DNA marker; from top to bottom: 4,500 bp, 3,000 bp, 2,250 bp, 1,500 bp, 1,000 bp, 750 bp, 500 bp, and 250 bp.

Not amplified strains: 34=ZY-60, 79=SH-17, 161=HG-45, 170=QY-17, 176=HG-10

Line 1- 45: ZY-11, ZY-05, ZY-12, ZY-50, ZY-16, ZY-42, ZY-54, ZY-57, ZY-30, ZY-19, ZY-40, ZY-43, marker, ZY-37, ZY-09, ZY-48, ZY-51, ZY-25, ZY-63, ZY-27, ZY-53, ZY-22, ZY-65, ZY-21, ZY-32, ZY-45, ZY-62, ZY-07, ZY-17, ZY-18, ZY-56, ZY-64, ZY-55, ZY-29, marker, ZY-68, KY-29, KY-06, KY-04, KY-15, KY-37, KY-27, KY-42, KY-22, KY-39, KY-14, KY-33

Line 46-93: NY-04, NY-72, NY-05, NY-70, NY-53, NY-08, NY-15, NY-91, NY-24, NY-01, NY-33, NY-25; marker, NY-39, NY-10, NY-40, NY-09, NY-22, NY-77, NY-38, NY-96, NY-55, NY-17, NY-13, NY-21, SH-22, SH-33, SH-51, SH-28, SH-32, SH-11, SH-04, SH-21, SH-20, SH-17, SH-85, SH-89, marker, SH-49, SH-31, SH-25, SH-67, SH-45, SH-68, SH-83, SH-98, SH-44, SH-69, SH-61, SH-06;

Line 94-140: CX-30, CX-10, CX-38, CX-12, CX-47, CX-22, CX-01, CX-39, CX-11, CX-46, CX-40; Marker, CX-20, CX-32, CX-26, CX-18, CX-24, CX-06, CX-31, CX-33, ZY-47, ZY-31, ZY-49, ZY-60, SH-26, SH-13, SH-59, SH-36, SH-37, SH-02, SH-14, SH-34, SH-24, SH-15, SH-70, SH-56, marker, SH-35, SH-05, SH-58, SH-99, SX-14, SX-41, SX-45, SX-32, SX-63, SX-42, SX-79, SX-16

Line 141-177: SX-09, SX-78, SX-58, SX-15; SX-35, SX-83, SX-53, SX-97, NY-76, NY-61, NY-92, NY-18, marker, NY-89, NY-74, NY-19, NY-03, NY-27, NY-50, NY-36, HG-20, HG-45, HG-13, HG-34, HG-38, QY-01, QY-05, QY-03, QY-25, QY-04, QY-17, QY-08, QY-15, QY-14, QY-21, marker, CVCC2246, HG-10, CX-42