



## Supplementary Material

# Food Preference of Rhesus Monkey (*Macaca mulatta*) in the Margalla Hills National Park, Islamabad, Pakistan

Shahzad Aslam<sup>1\*</sup>, Amjad Rashid Kayani<sup>2</sup>, Muhammad Irfan Ashraf<sup>3</sup>,  
Muhammad Azhar Jameel<sup>2</sup> and Kiran Sahar<sup>4</sup>

<sup>1</sup>Department of Zoology, Islamabad College for Boys, G-6/3, Islamabad, Pakistan

<sup>2</sup>Department of Zoology, Wildlife and Fisheries, Pir Mehr Ali Shah Arid Agriculture University, Rawalpindi, Pakistan

<sup>3</sup>Department of Forestry, University of Sargodha, Punjab, Pakistan

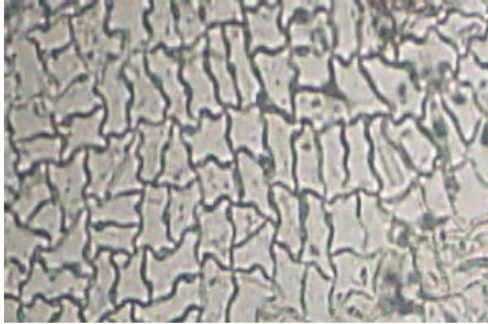
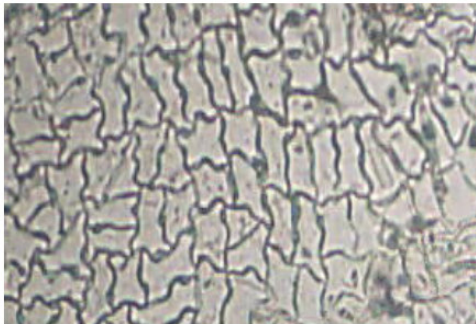
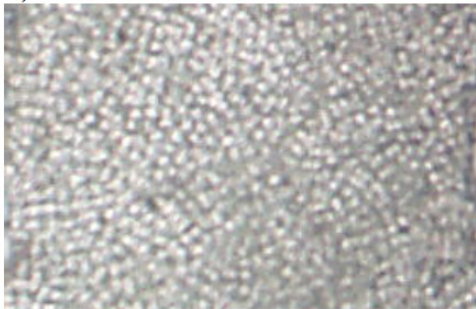
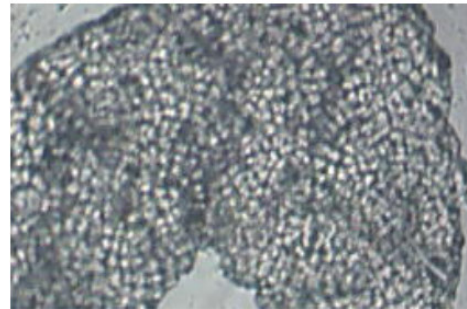
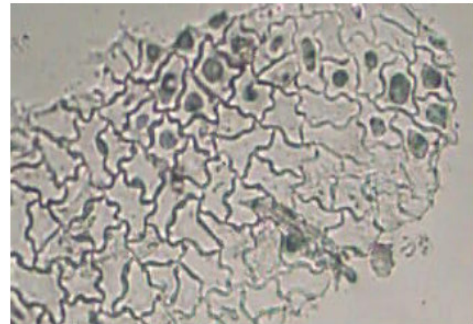
<sup>4</sup>Department of Zoology, Benazir Bhutto Women University, Peshawar, Pakistan

\* Corresponding author: shahzad\_zoologist@yahoo.com  
0030-9923/2024/0003-1249 \$ 9.00/0



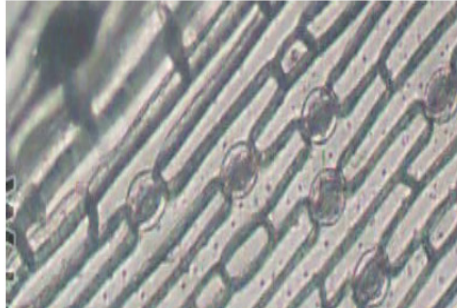
Copyright 2024 by the authors. Licensee Zoological Society of Pakistan.

This article is an open access  article distributed under the terms and conditions of the Creative Commons Attribution (CC BY) license (<https://creativecommons.org/licenses/by/4.0/>).

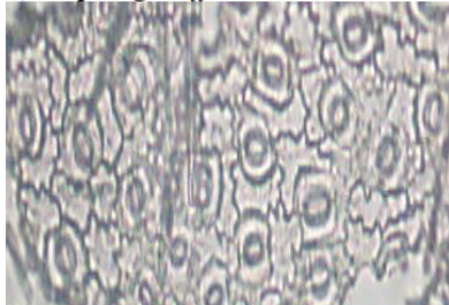
**Microhistological Reference Slides**i) *Acacia modesta*ii) *Acacia nilotica*iii) *Albizia lebbek*iv) *Anagalis druens***Microhistological Fecal Slides**



**Microhistological Reference Slides**



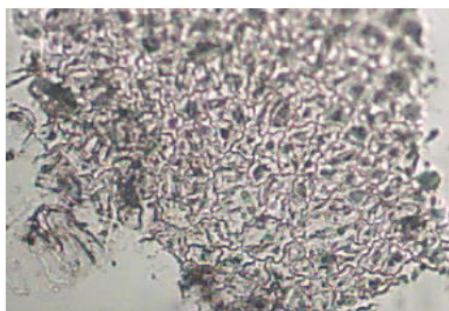
v) *Asparagus officinalis*



vi) *Bauhinia variegata*

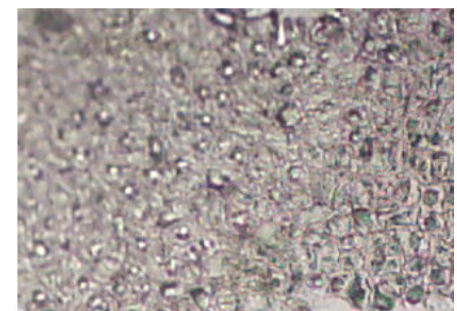
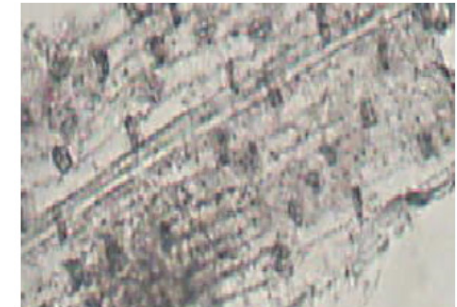
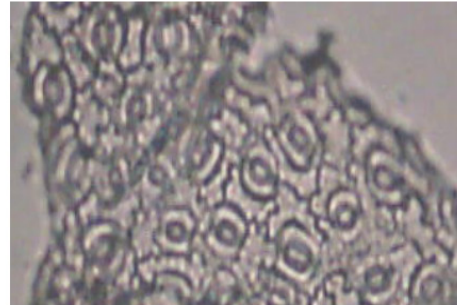


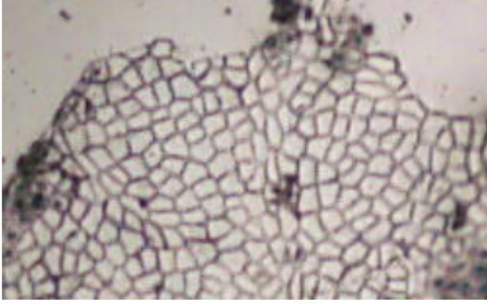
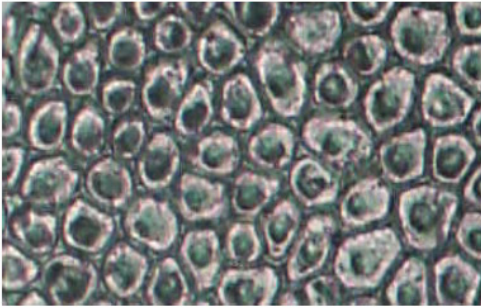
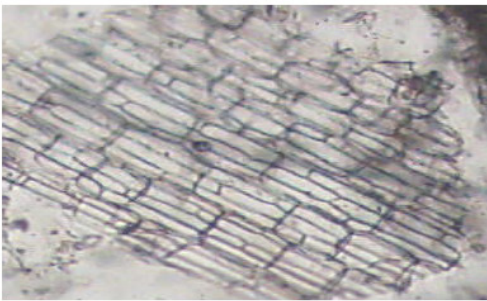
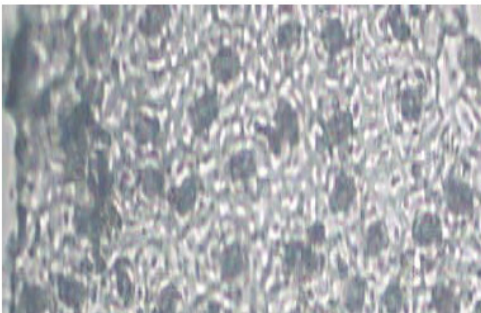
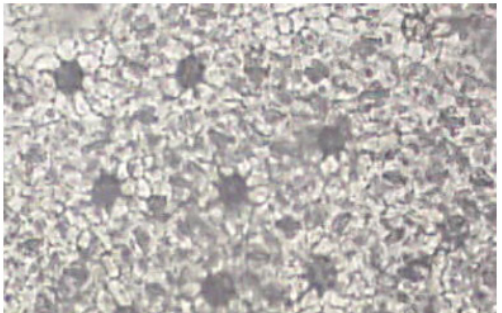
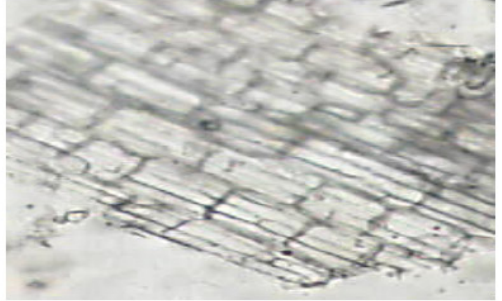
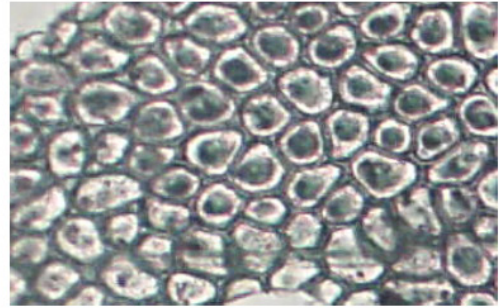
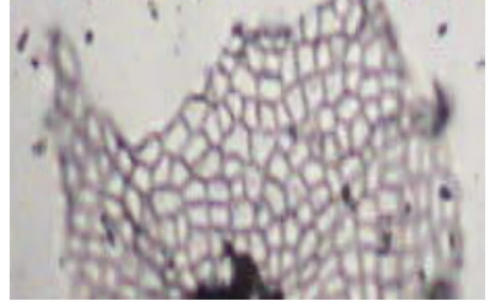
vii) *Bambusa arundinacea*



viii) *Brachiaria ramosa*

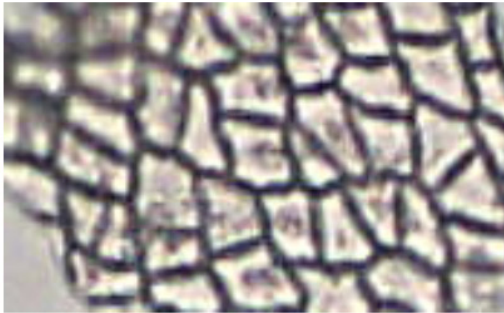
**Microhistological Fecal Slides**



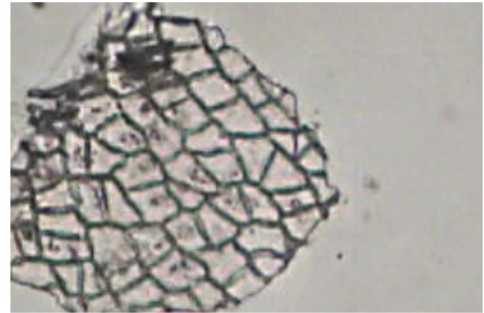
**Microhistological Reference Slides**ix) *Broussonetia papyrifera*x) *Buxus papilosa*xi) *Lepidium sativum*xii) *Carissa opaca***Microhistological Fecal Slides**



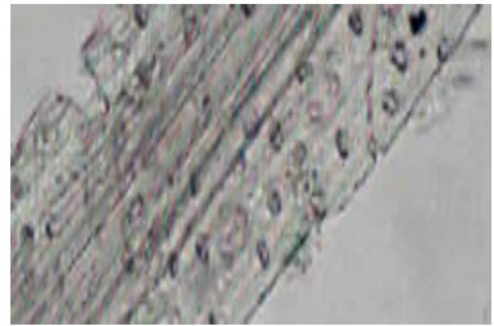
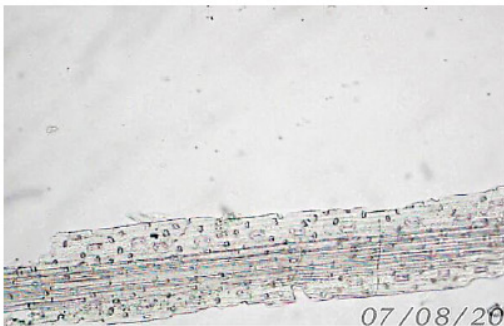
**Microhistological Reference Slide**



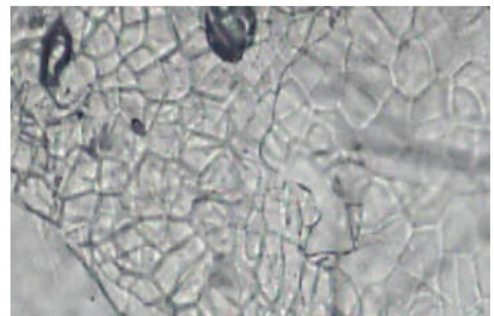
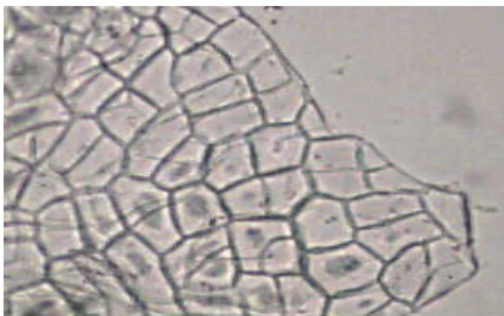
**Microhistological Fecal Slide**



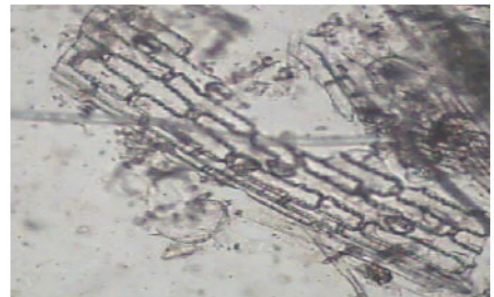
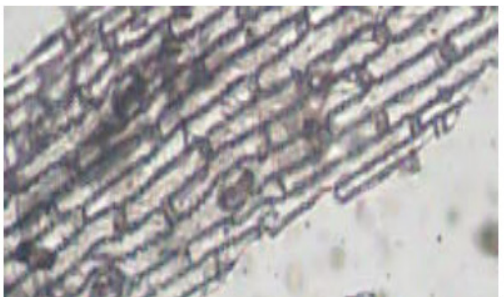
xiii) *Cassia fistula*



xiv) *Cynodon dactylon*

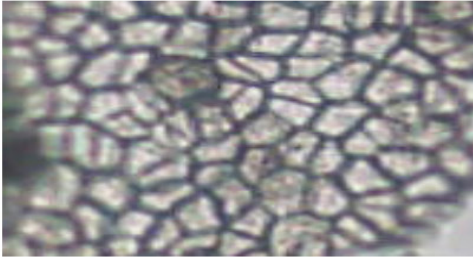


xv) *Dalbergia sissoo*

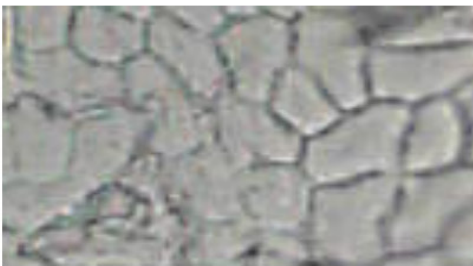


xvi) *Elusine indica*

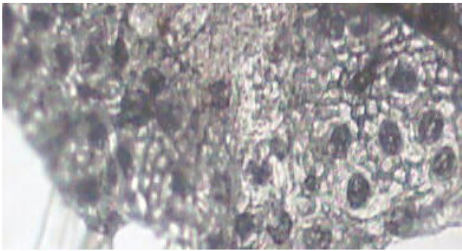
**Microhistological Reference Slides**



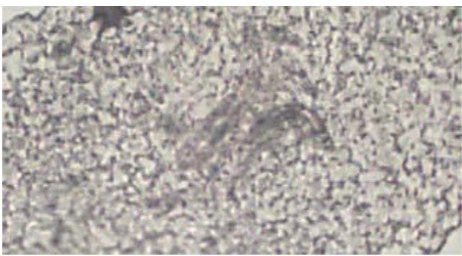
xvii) *Ficus bengalensis*



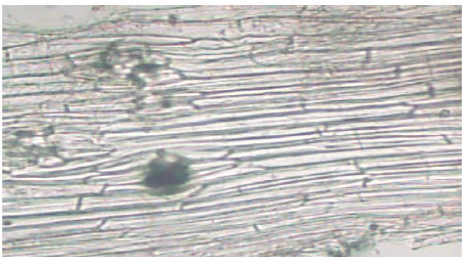
xviii) *Ficus carica*



xix) *Ficus religiosa*

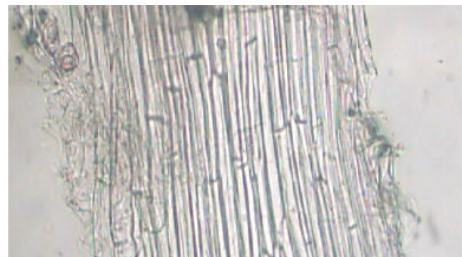
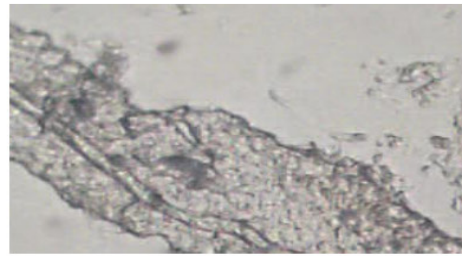
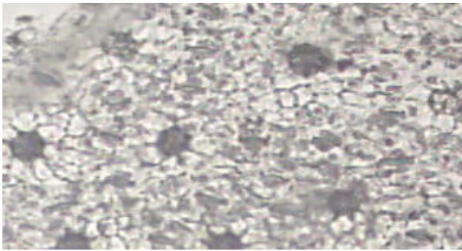
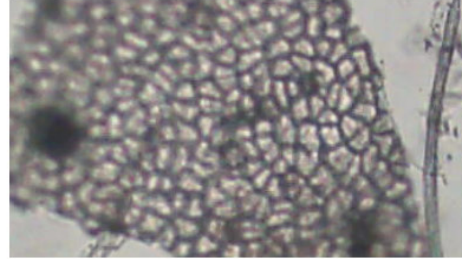


xx) *Ficus virgata*



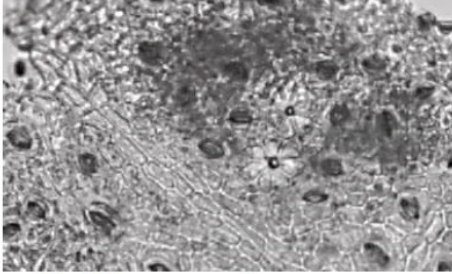
xxi) *Mallotus philippensis*

**Microhistological Fecal Slides**

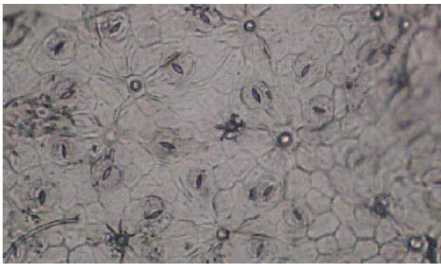




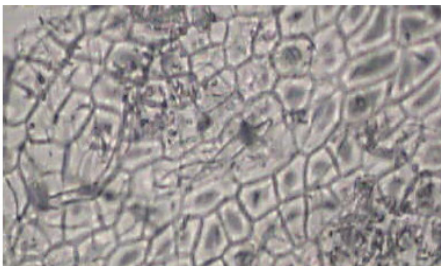
**Microhistological Reference Slide**



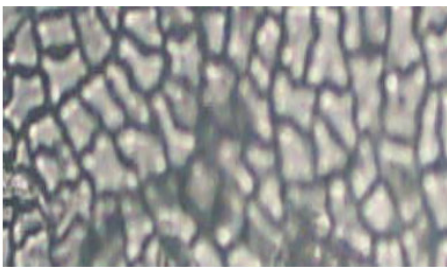
xxii) *Maytenus royleana*



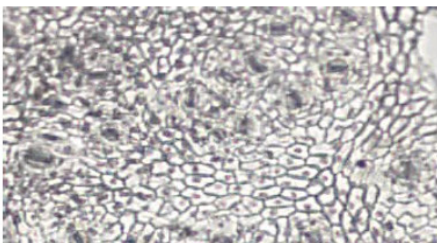
xxiii) *Morus alba*



xxiv) *Phyllanthus emblica*

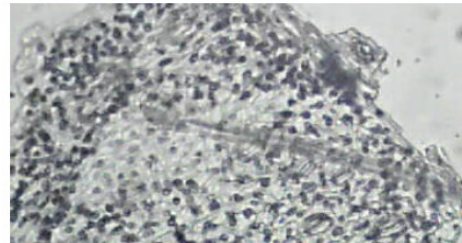
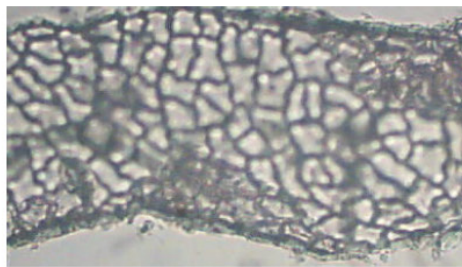
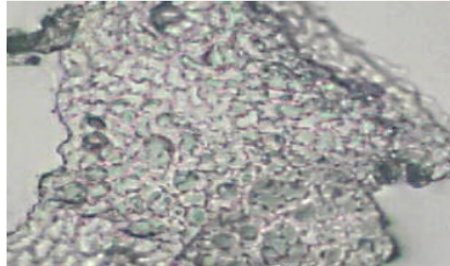
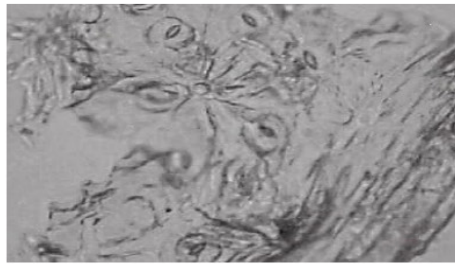
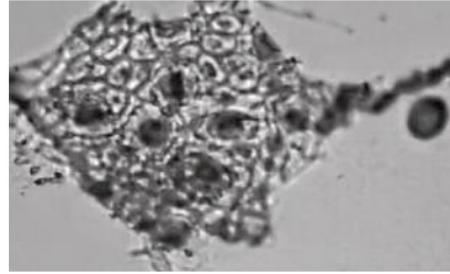


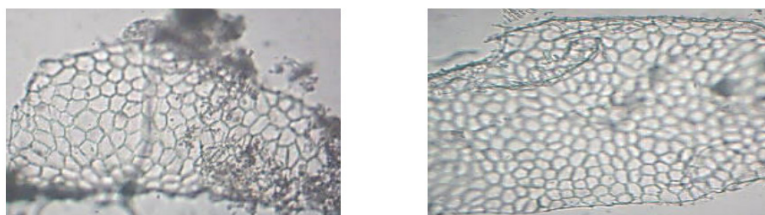
xxv) *Punica granatum*



xxvi) *Pyrus pashia*

**Microhistological Fecal Slide**



xxvii) *Ziziphus mauritiana*

Supplementary Fig. 1. Tissues in leaves.

(i) *Acacia modesta*, (ii) *Acacia nilotica*, (iii) *Albizia lebbek*, (iv) *Anagallis druens*, (v) *Asparagus officinalis*, (vi) *Bauhinia variegata*, (vii) *Bambusa arudinasia*, (viii) *Brachiaria ramosa*, (ix) *Broussonetia papyrifera*, (x) *Buxus papilossa*, (xi) *Lepidium sativum*, (xii) *Carissa opaca*, (xiii) *Cassia fistula*, (xiv) *Cynodon dactylon*, (xv) *Dalbergia sissoo*, (xvi) *Elusine indica*, (xvii) *Ficus bengalensis*, (xviii) *Ficus carica*, (xix) *Ficus religiosa*, (xx) *Ficus virgata*, (xxi) *Mallotus philippensis*, (xxii) *Maytenus roylena*, (xxiii) *Morus alba*, (xxiv) *Phyllanthus emblica*, (xxv) *Punica granatum*, (xxvi) *Pyrus pashia*, (xxvii) *Ziziphus mauritiana*.