



# A Pilot Study Using Remote Digital Necropsy Images to Diagnose Gross Lesions in Swedish Cattle

KARIN ALVÅSEN<sup>1\*</sup>, KARIN MARIA OLOFSSON<sup>2</sup>, RAYMOND KENT FENTON<sup>3</sup>, ULRIKA ROCKSTRÖM<sup>4</sup>, LENA-MARI TAMMINEN<sup>1</sup>, NILS FALL<sup>1</sup>

<sup>1</sup>Department of Clinical Sciences, Faculty of Veterinary Medicine and Animal Sciences, Swedish University of Agricultural Sciences (SLU), Uppsala, Sweden; <sup>2</sup>Department of Pathology and Wildlife Diseases, Swedish Veterinary Agency (SVA), Uppsala, Sweden; <sup>3</sup>Feedlot Health Management Services by Telus Agriculture and Consumer Goods (FHMS), Okotoks, Alberta, Canada; <sup>4</sup>Gård and Djurhälsan, Kungsängens Gård, Uppsala, Sweden.

Received | February 26, 2024; Accepted | March 28, 2024; Published | May 06, 2024

\*Correspondence | Karin Alvåsen, Department of Clinical Sciences, Faculty of Veterinary Medicine and Animal Sciences, Swedish University of Agricultural Sciences (SLU), Uppsala, Sweden; Email: karin.alvasen@slu.se

Citation | Alvåsen K, Olofsson KM, Fenton RK, Rockström U, Tamminen L-M, Fall N (2024). A pilot study using remote digital necropsy images to diagnose gross lesions in Swedish cattle. Adv. Anim. Vet. Sci., 12(6):1143-1147.

DOI | <https://dx.doi.org/10.17582/journal.aavs/2024/12.6.1143.1147>

ISSN (Online) | 2307-8316



Copyright: 2024 by the authors. Licensee ResearchersLinks Ltd, England, UK.

This article is an open access article distributed under the terms and conditions of the Creative Commons Attribution (CC BY) license (<https://creativecommons.org/licenses/by/4.0/>).

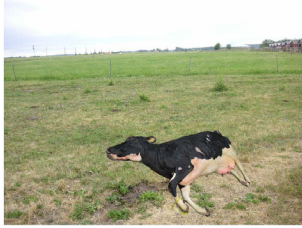


Photo 1: Animal in environment <sup>1,2</sup>



Photo 2: Whole animal <sup>1,2,3,4</sup>



Photo 13: Opened left kidney <sup>1</sup>



Photo 14: Opened vena cava <sup>1,2,3</sup>



Photo 3: Back end <sup>1</sup>

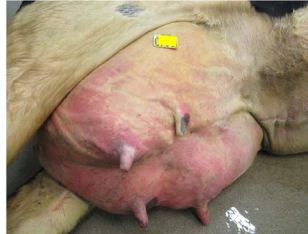


Photo 4: External udder <sup>1</sup>

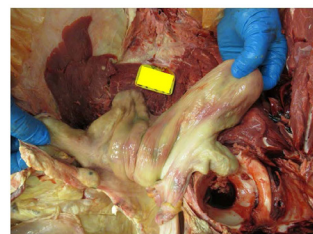


Photo 15: Whole uterus <sup>1</sup>



Photo 16: Opened uterus <sup>1,2</sup>

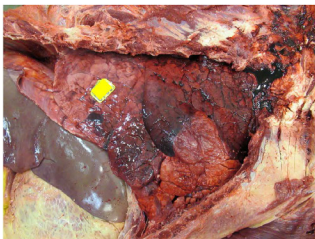


Photo 5: Opened chest <sup>1,2,3,4</sup>

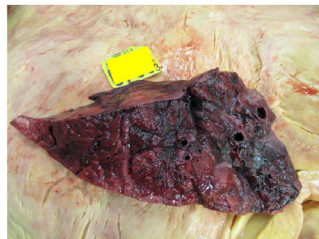


Photo 6: Lung slab sections <sup>1,2,3,4</sup>



Photo 17: Opened abomasum <sup>1,4</sup>

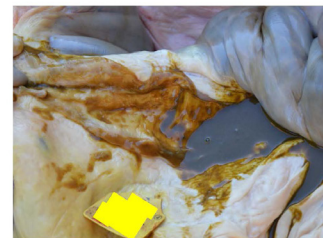


Photo 18: Opened small intestine <sup>1,2,3,4</sup>



Photo 7: Opened left-side heart <sup>1,2,3,4</sup>



Photo 8: Opened right-side heart <sup>1</sup>



Photo 19: Opened spiral colon <sup>1,2,3,4</sup>

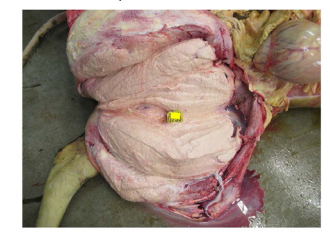


Photo 20: Opened mammary gland <sup>1</sup>



Photo 9: Opened trachea and larynx <sup>1,2,3,4</sup>

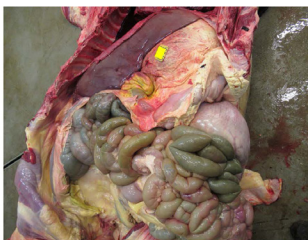


Photo 10: Opened abdomen <sup>1,2,3</sup>



Photo 21: Umbilicus and umbilical vessels <sup>4</sup>

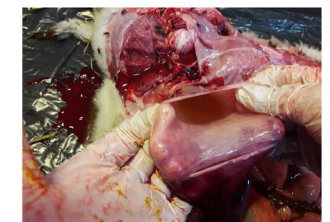


Photo 22: Opened bladder <sup>4</sup>

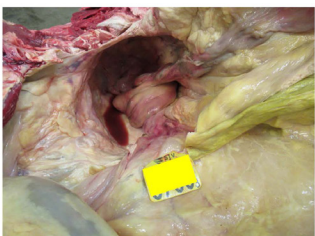


Photo 11: Caudal abdomen <sup>1</sup>



Photo 12: Opened stifle joint <sup>1,2,3</sup>



Photo 23: Opened carpus (front knee) <sup>4</sup>

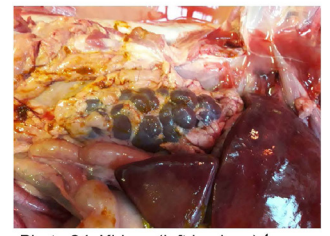


Photo 24: Kidney (left in place) <sup>4</sup>

**Supplementary Figure 1:** Images needed for the RDN method. Photos 1-20 and 21-24 from case number 5 and 2, respectively, in Table 1.

Images for <sup>1</sup>, dairy cows; <sup>2</sup>, mature beef cows; <sup>3</sup>, non-producing calves and yearling, and <sup>4</sup>, neonatal calves.







